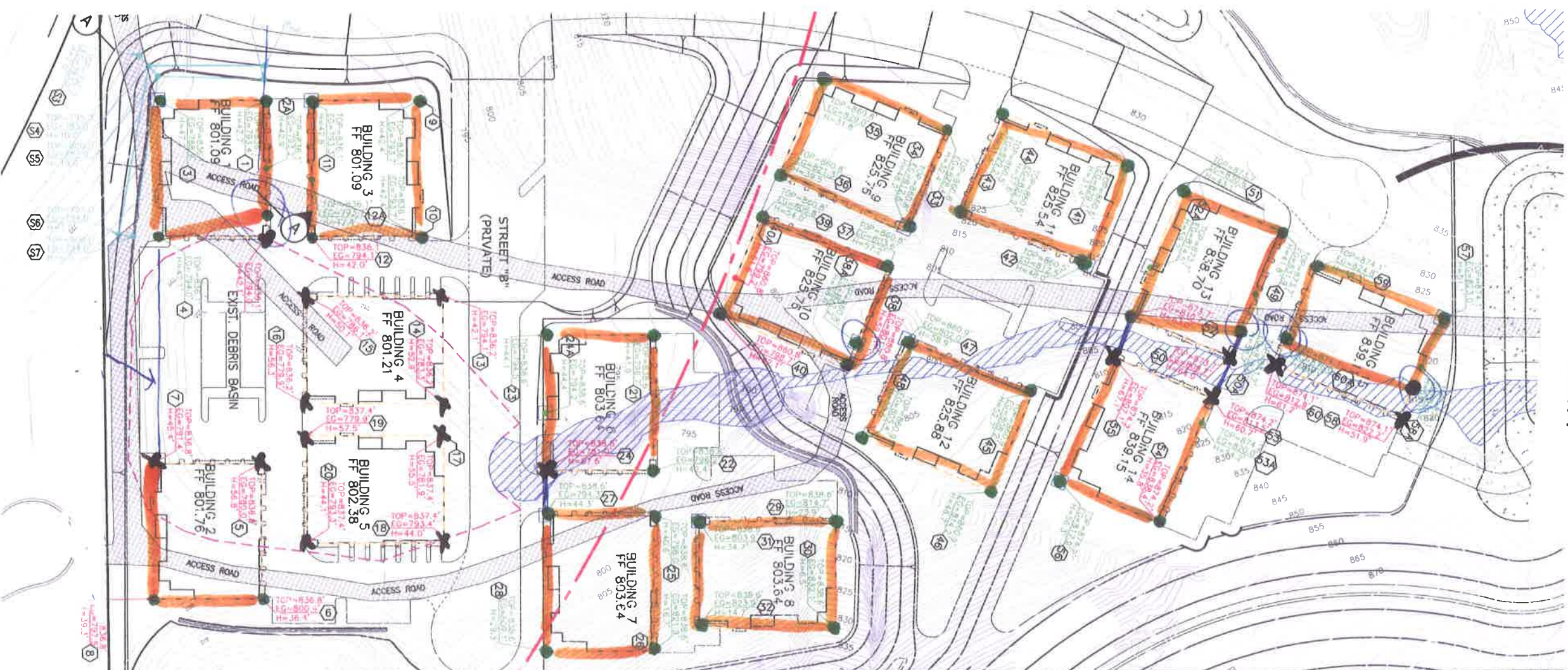


EXHIBIT F



Pole #	Notes
Pole #13	AS-BUILT NOTES
Pole #14	50, 58, and 60 Moved out of creek
Pole #15	Extended flagging from 56 - 52
Pole #16	38 Moved from creek
Pole #17	Flagging extended from 23 - 27
Pole #18	5, 7, 13 - 20 In basin not done
Pole #19	Flagging extended from 8 - 4
Pole #20	7 and 5 not done in basin
Pole #21	2 moved out of basin access road
Pole #22	
Pole #23	
Pole #24	
Pole #25	
Pole #26	
Pole #27	
Pole #28	
Pole #29	
Pole #30	
Pole #31	
Pole #32	
Pole #33	
Pole #34	
Pole #35	
Pole #36	
Pole #37	
Pole #38	
Pole #39	
Pole #40	
Pole #41	
Pole #42	
Pole #43	
Pole #44	
Pole #45	
Pole #46	
Pole #47	
Pole #48	
Pole #49	
Pole #50	
Pole #51	
Pole #52	
Pole #53	
Pole #54	
Pole #55	
Pole #56	

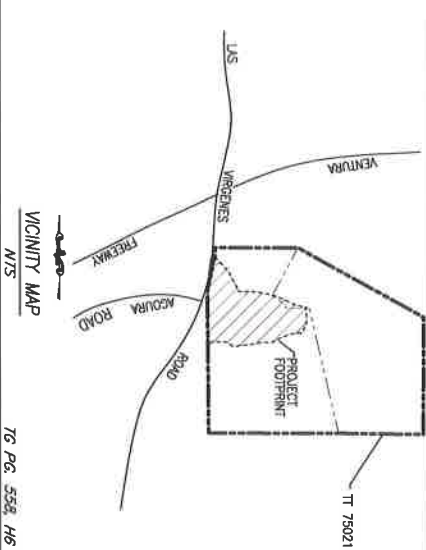
LEGEND:

- BUILDING STORY POLE INSTALLED
- ALTERNATE STORY POLE INSTALLED
- BUILDING STORY POLE NOT INSTALLED
- TALLEST POLE INSTALLED
- ENVIRONMENTALLY SENSITIVE
- STORY POLE NUMBER
- DESIGNATES AN ALTERNATE LOCATION
- BUILDING ROOF LINE FLAGGING
- FLAGGING HUNG ON WIRE BETWEEN POLES
- WHERE ONE POLE COULD NOT BE INSTALLED
- EXISTING DEBRIS BASIN
- EG EXISTING GRADE
- FF FINISHED FLOOR
- FG FINAL GRADE
- TOP ROOF ELEVATION
- H POLE HEIGHT

SCALE: 1"=40'

AS-BUILT

NOTE: ALL POLES ASSOCIATED WITH THE COMMERCIAL BUILDINGS WERE INSTALLED PER PLAN.

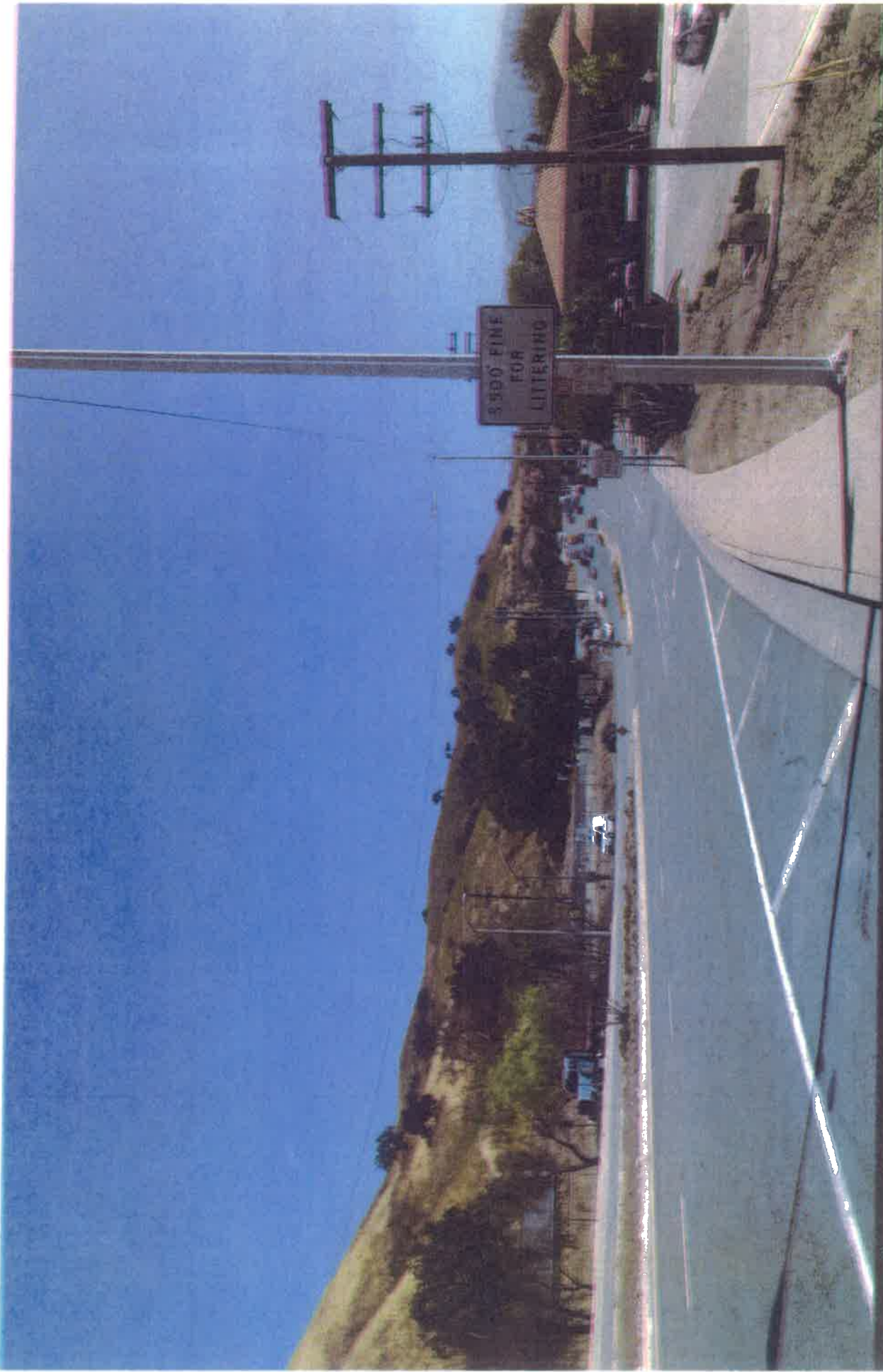


OWNER/SUBDIVIDER:
 THE NEW HOME COMPANY
 85 ENTERPRISE DRIVE, SUITE 450
 ANAHEIM, CA 92806
 PH: (949) 582-2899

SURVEY PROVIDED BY:
 UNITED CIVIL, INC.
 30141 AGOURA ROAD, SUITE 215
 AGOURA HILLS, CA 91301
 TEL: (818) 707-8646
 FAX: (818) 707-8649

PLAN PREPARED BY:
 UNITED CIVIL, INC.
 30141 AGOURA ROAD, SUITE 215
 AGOURA HILLS, CA 91301
 TEL: (818) 707-8646
 FAX: (818) 707-8649

**WEST VILLAGE AT CALABASAS
 STORY POLE EXHIBIT
 VTT-75021**



View From Las Virgenes Road Looking South
(In Front Of Taco Bell)



CITY of CALABASAS



View From Las Virgenes Road Looking South
(In Front Of 7-Eleven / Calabasas Car Care)



CITY of CALABASAS



View From Las Virgenes Road Looking South
(In Front Of Shell Gas Station)

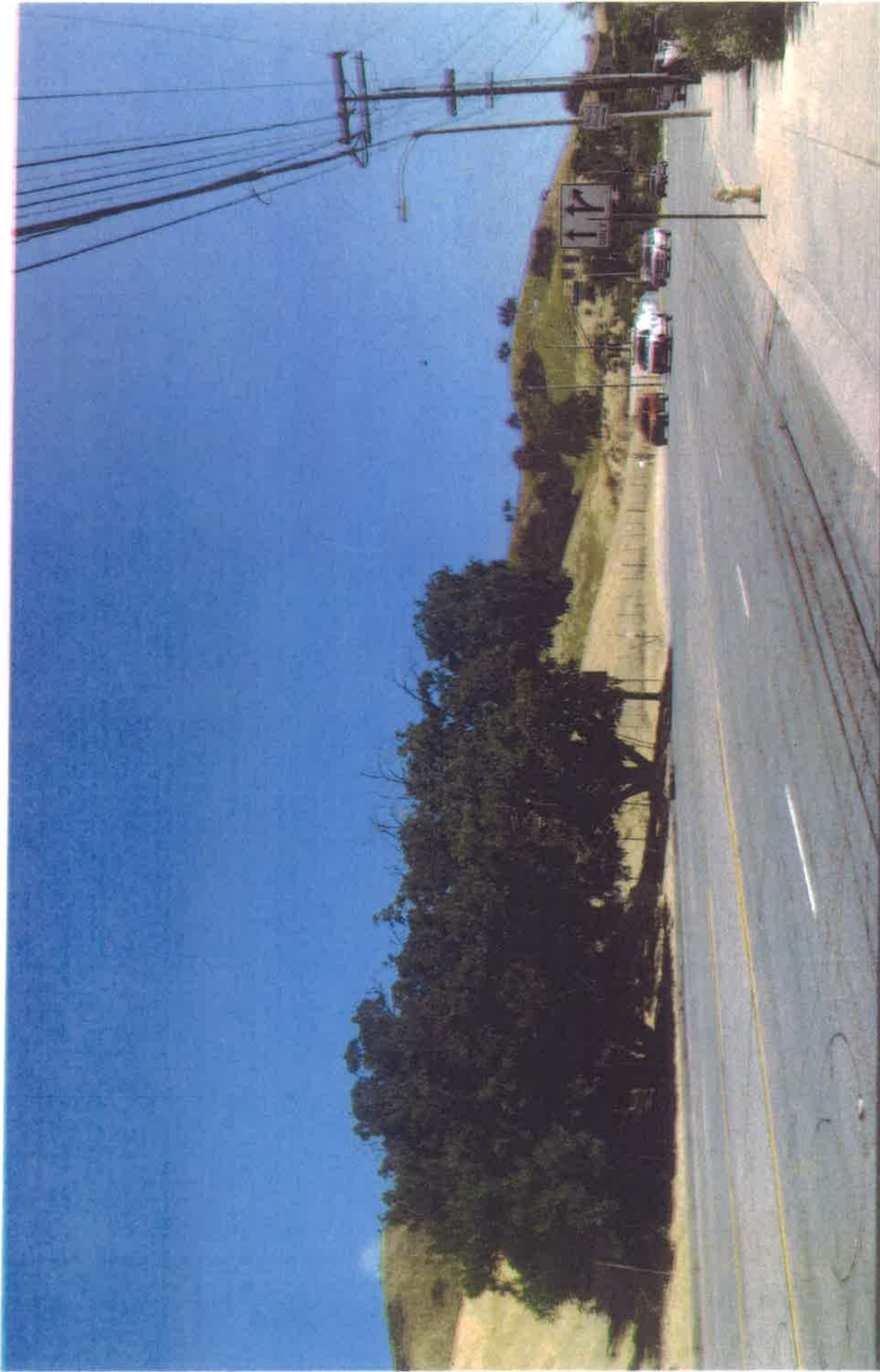


CITY OF CALABASAS



View From Las Virgenes Road Looking South
(In Front Of Pacific Bell Facility)

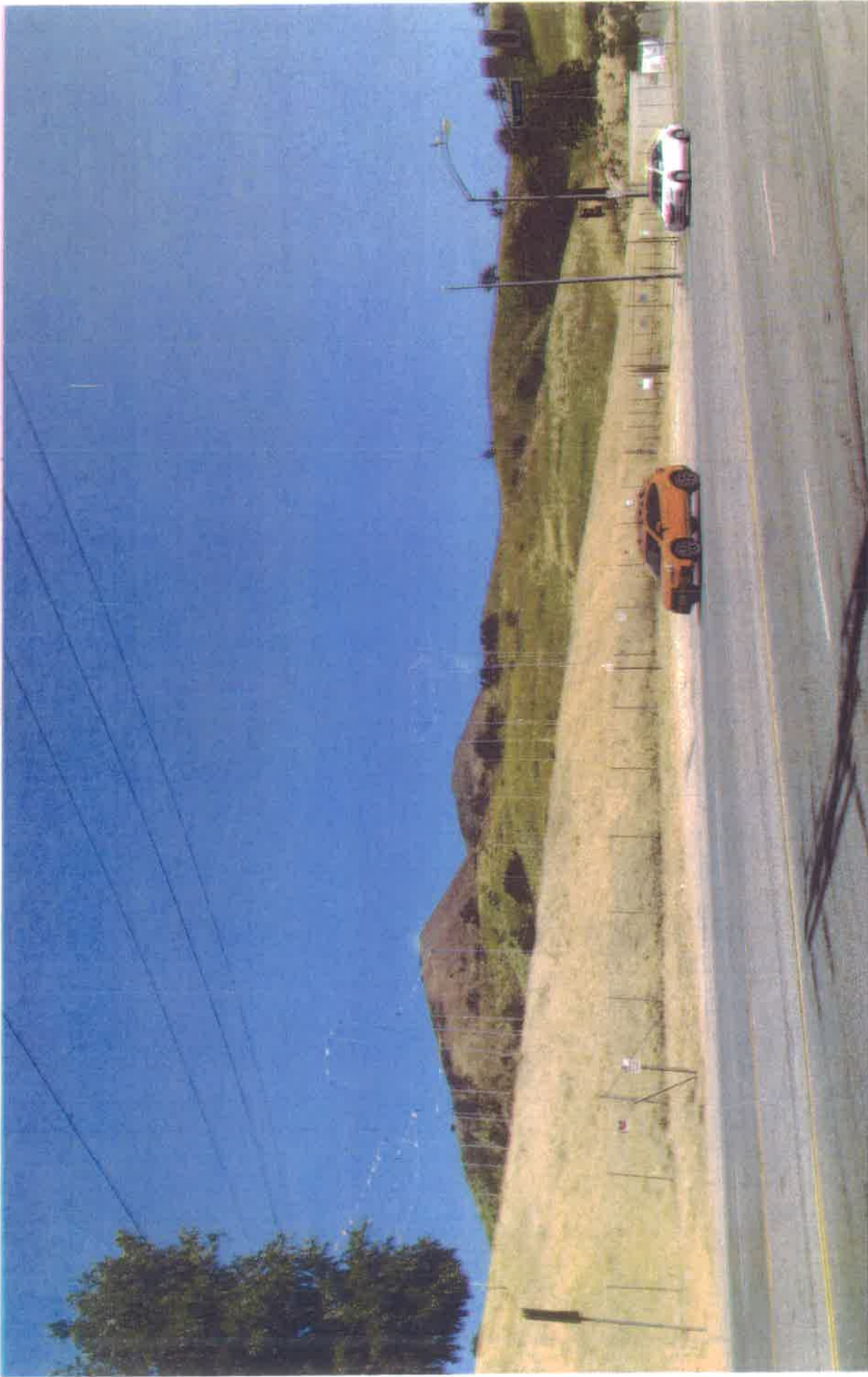




View From Las Virgenes Road Looking South
(In Front Of Chevron Gas Station)



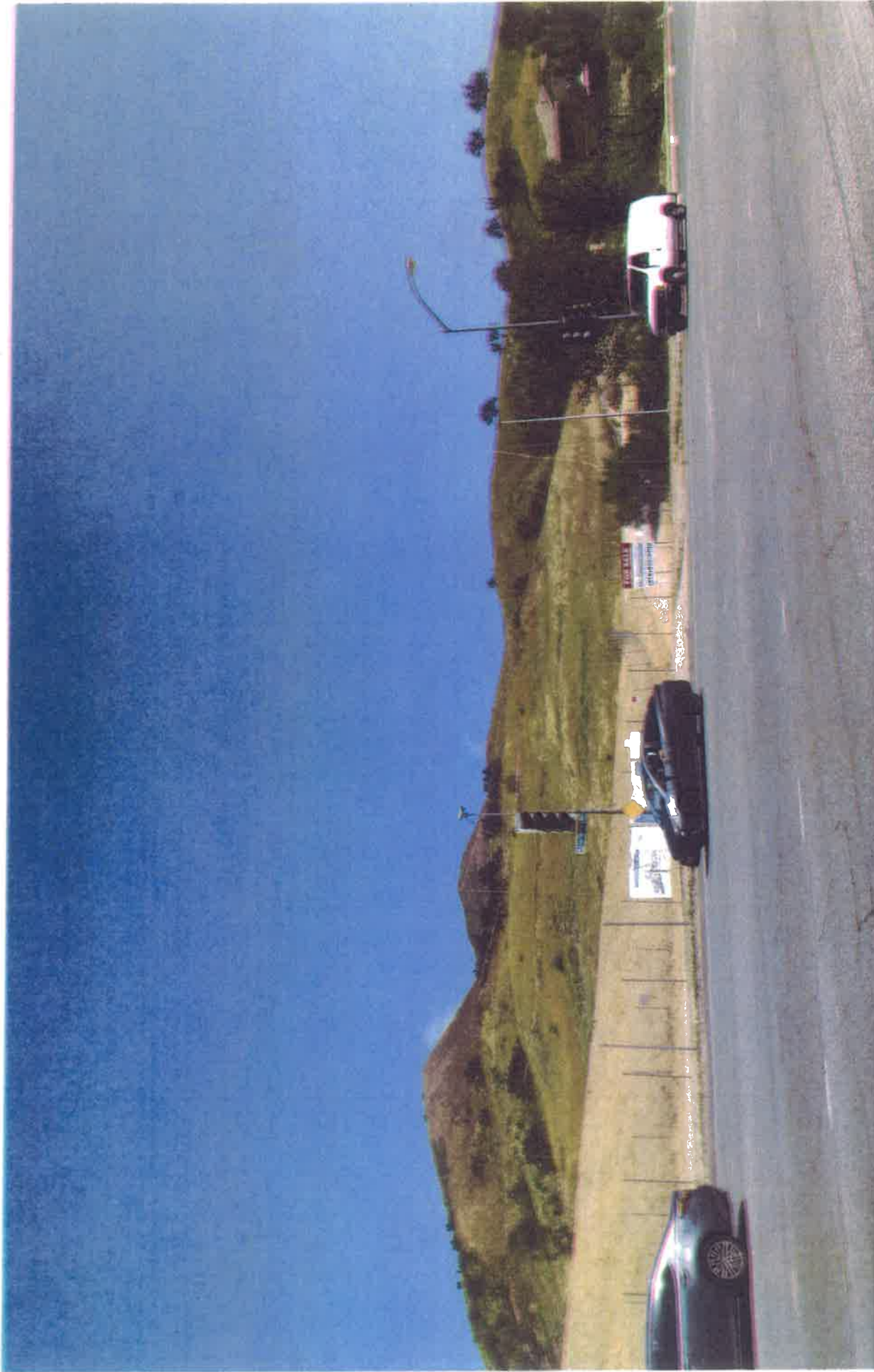
CITY OF CALABASAS



View From Las Virgenes Road Looking Southeast
(In Front Of McDonalds Restaurant)

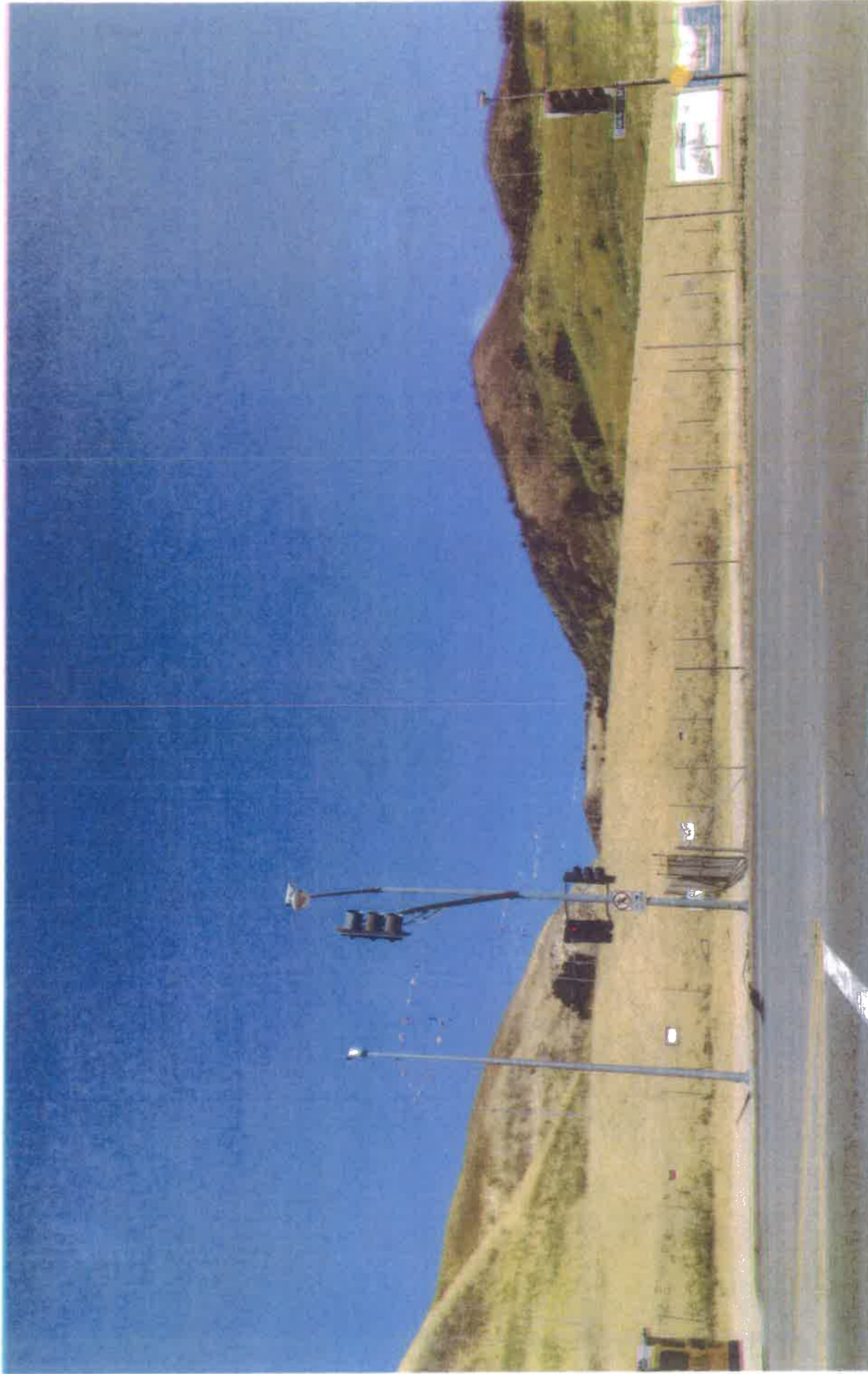


CITY of GALABASIS



View From Las Virgenes Road Looking Southeast
(In Front Of McDonalds – further south)





View From Las Virgenes Road Looking East
(At The Las Virgenes Rd/Agoura Rd Intersection)





View From Las Virgenes Road Looking Northeast
(At The Las Virgenes Rd/Agoura Rd Intersection)

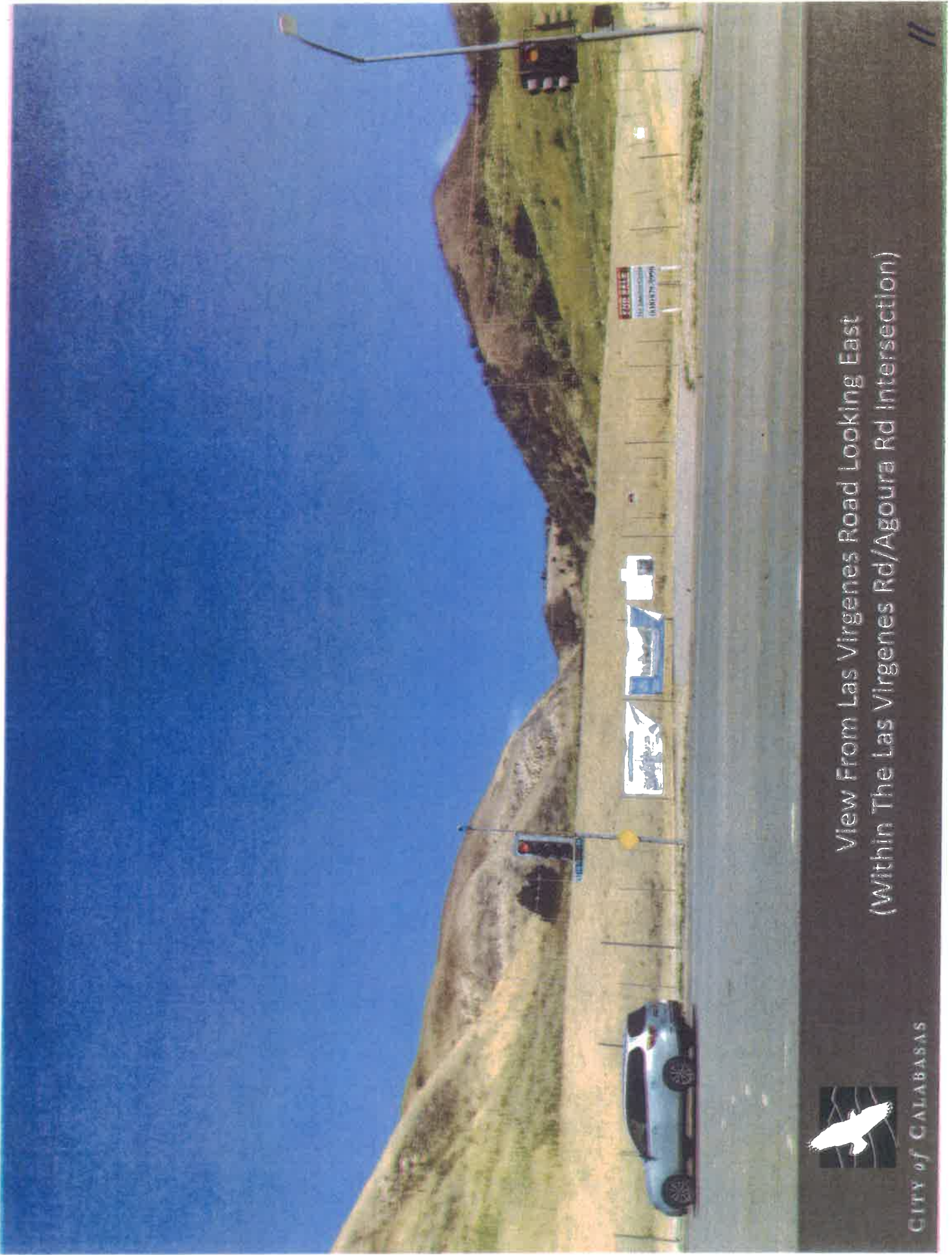




View From Las Virgenes Road Looking Southeast
(From the North Corner Of Las Virgenes Rd/Agoura Rd Intersection)



CITY of CALABASAS



View From Las Virgenes Road Looking East
(Within The Las Virgenes Rd/Agoura Rd Intersection)

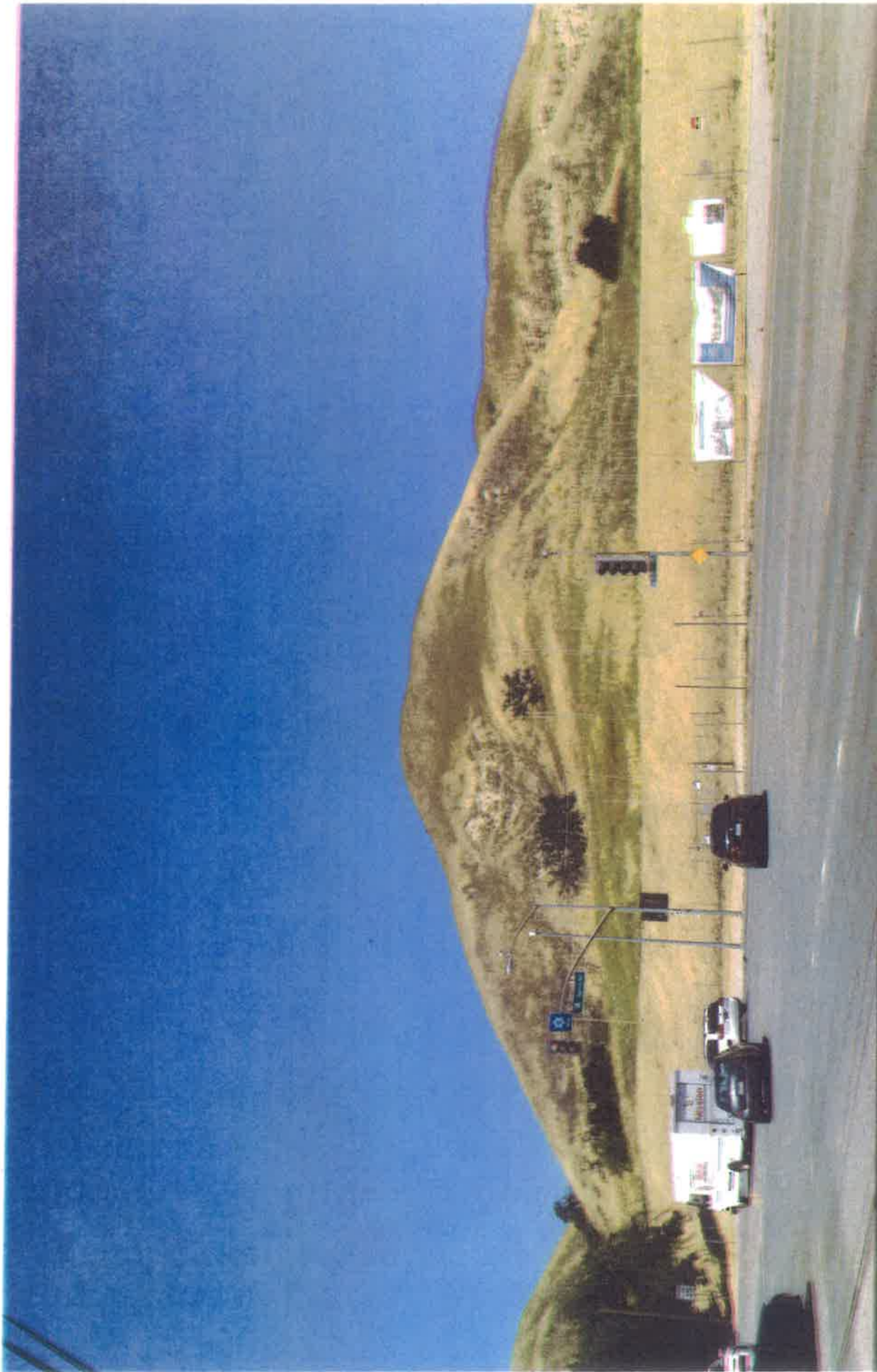


CITY of CALABASAS



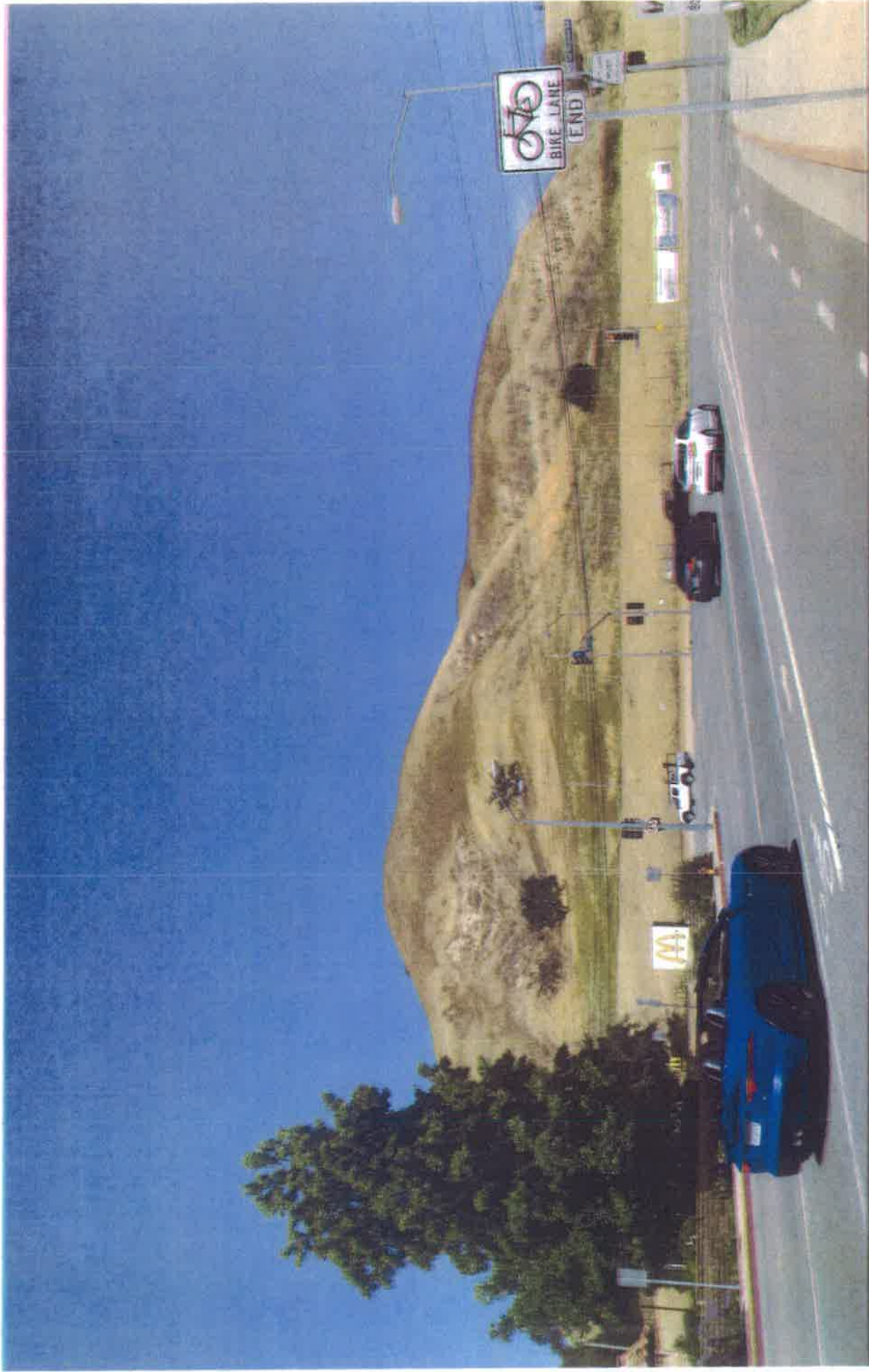
CITY of CALABASAS

View From Las Virgenes Road Looking East
(From The South Corner of The Las Virgenes Rd/Agoura Rd Intersection)



View From Las Virgenes Road Looking Northeast
(From The South Corner Of Las Virgenes Rd/Agoura Rd Intersection)





View From Agoura Road Looking Northeast
(From Next To Malibu Canyon Plaza North Entrance Driveway)



CITY of CALABASAS



View From Las Virgenes Road Looking Northeast
(From Next To Malibu Canyon Plaza East (Main) Entrance Driveway)





View From Las Virgenes Road Looking East
(From In Front Of Malibu Canyon Plaza)



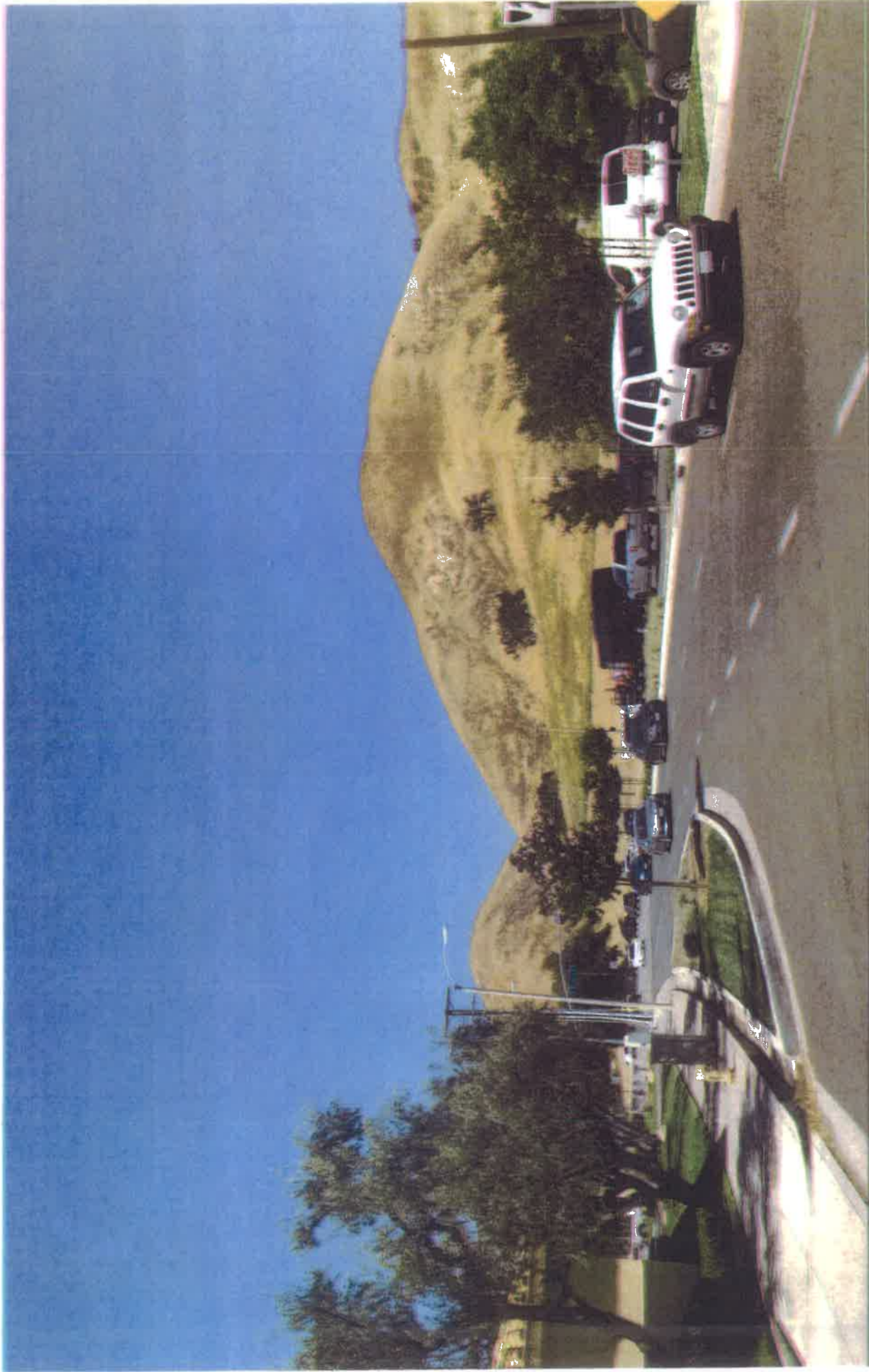
CITY OF CALABASAS

16



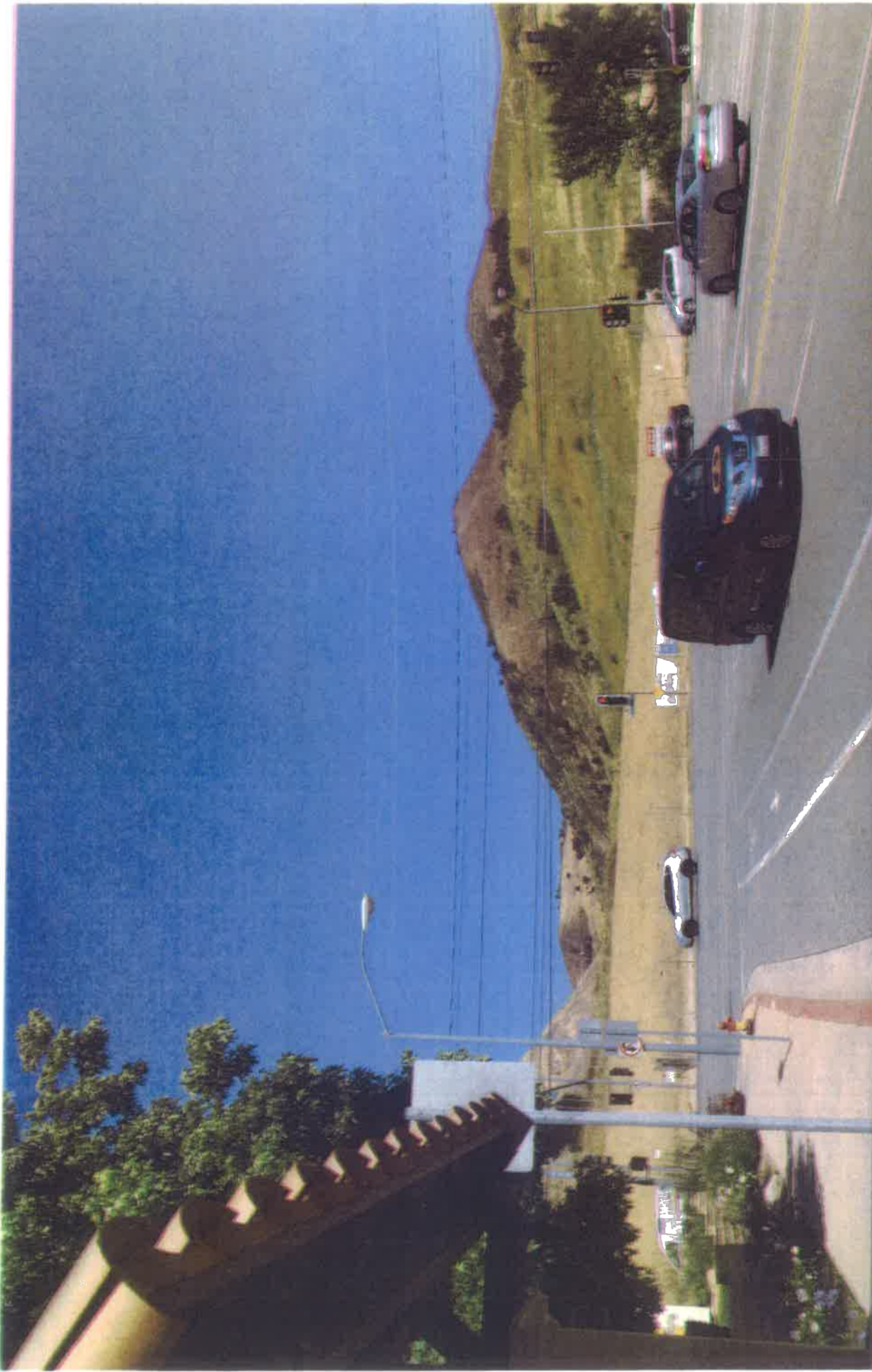
View From Las Virgenes Road Looking Northeast
(From In Front Of Malibu Canyon Plaza)





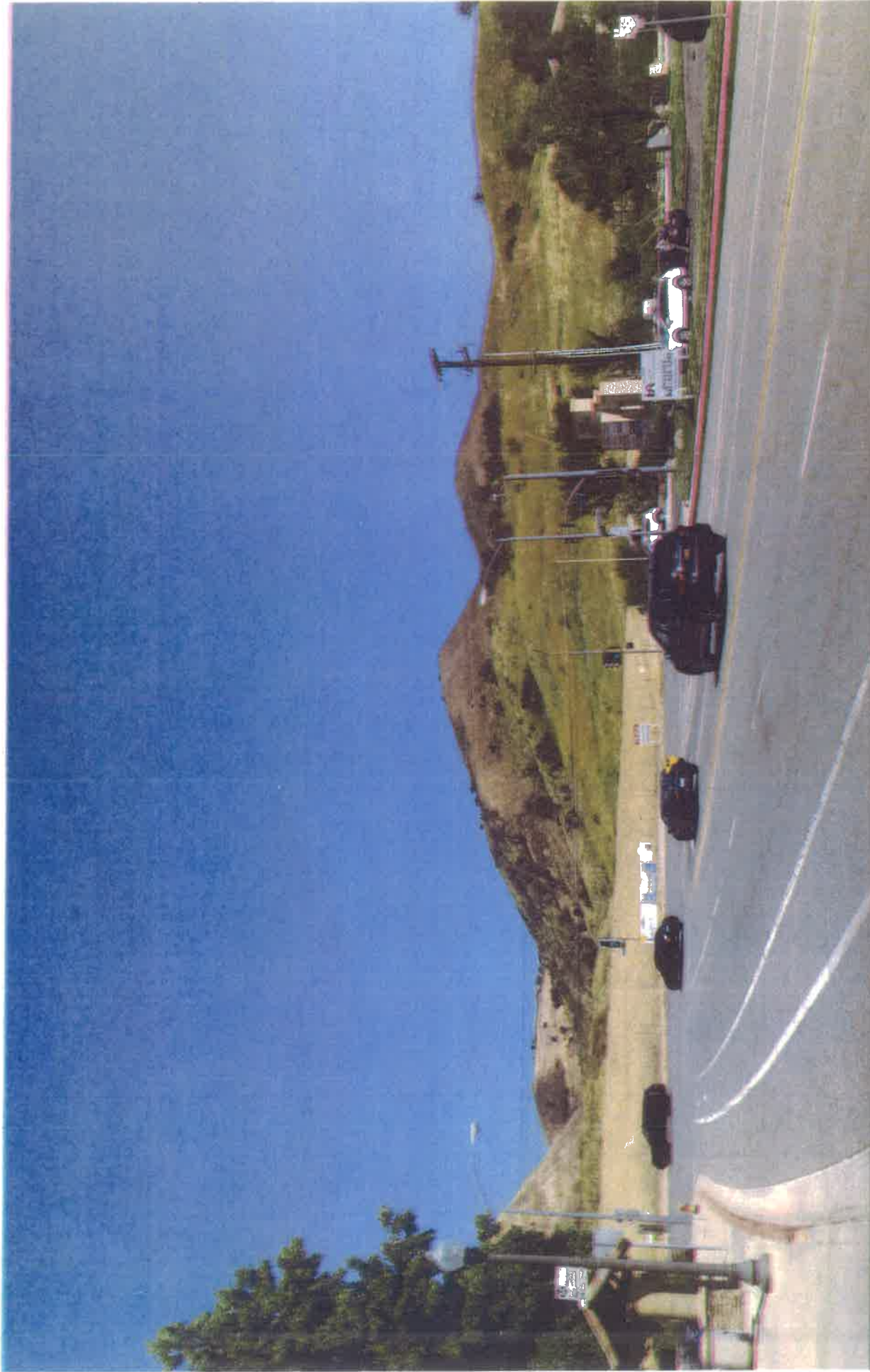
View From Las Virgenes Road Looking North
(From South Of Malibu Canyon Plaza Rear Entrance Driveway)





View From Agoura Road Looking East
(From Next To the Bus Shelter Near McDonalds Restaurant)





View From Agoura Road Looking East/Southeast
(From West Of McDonalds Restaurant Entrance)



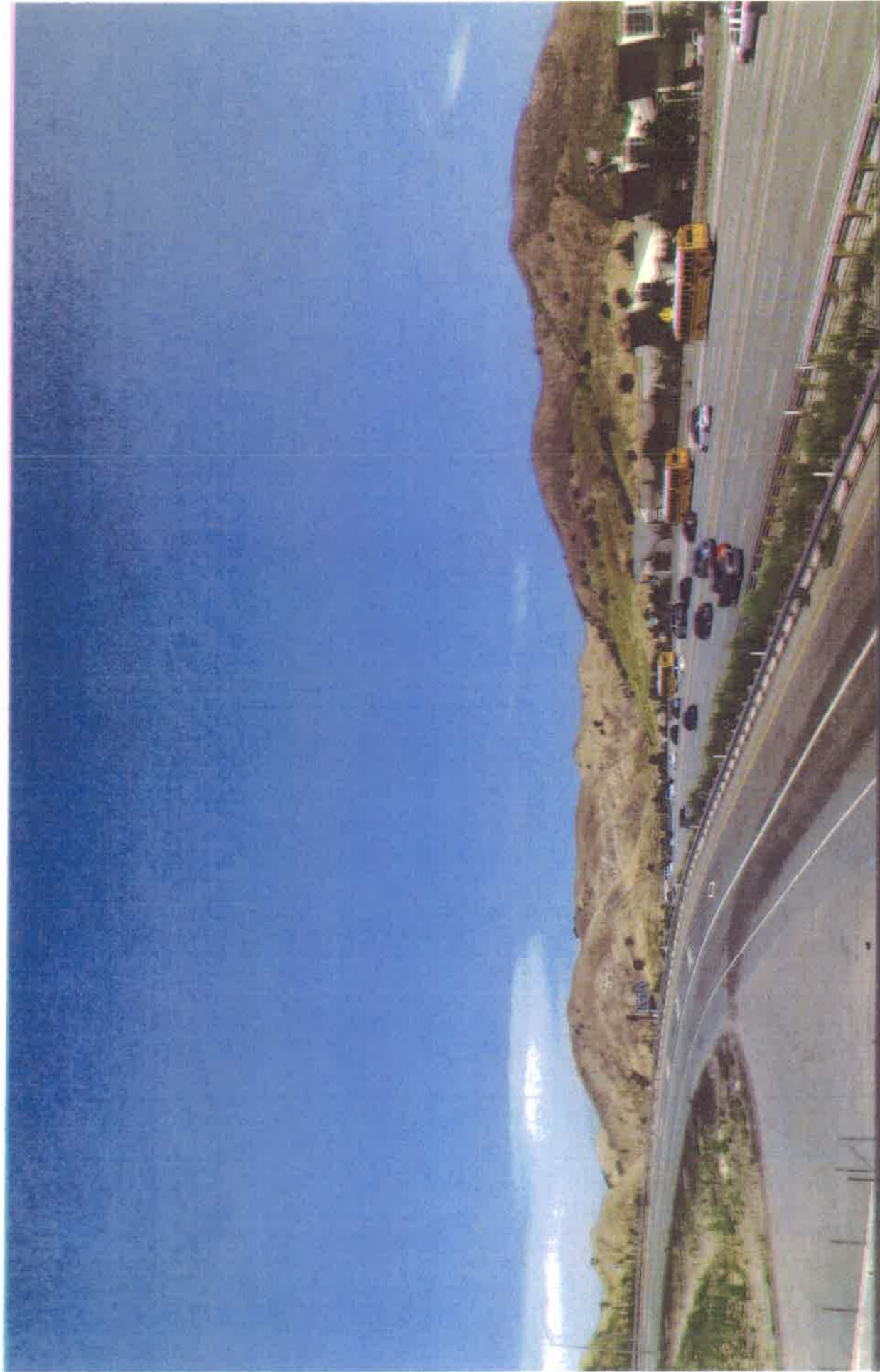
CITY OF CALABASAS



View From Agoura Road Looking East
(From Next To Albertson's)



CITY OF CALABASAS



View From Lost Hills Overpass Looking Northeast



CITY of GALABASIS

92