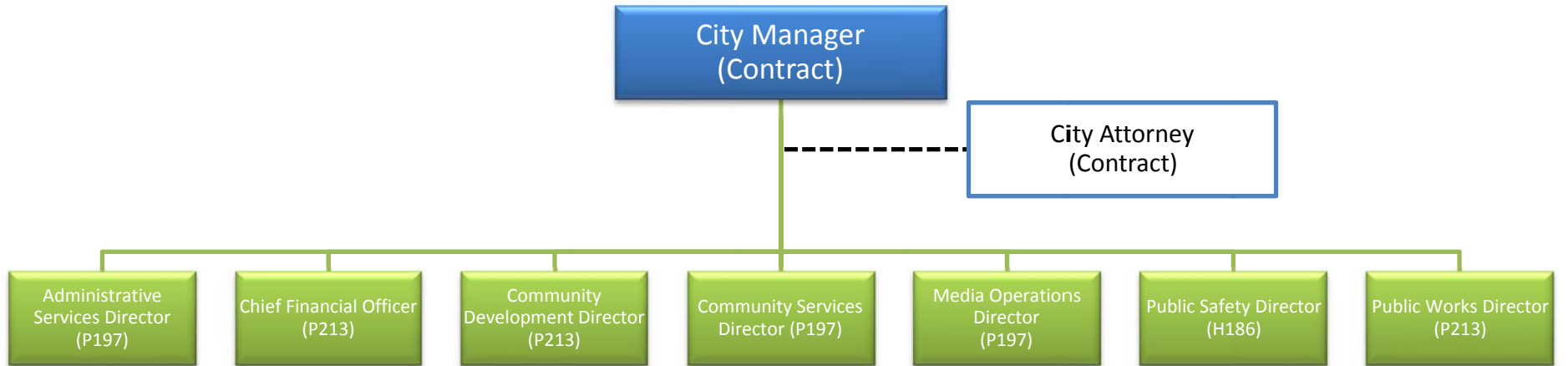
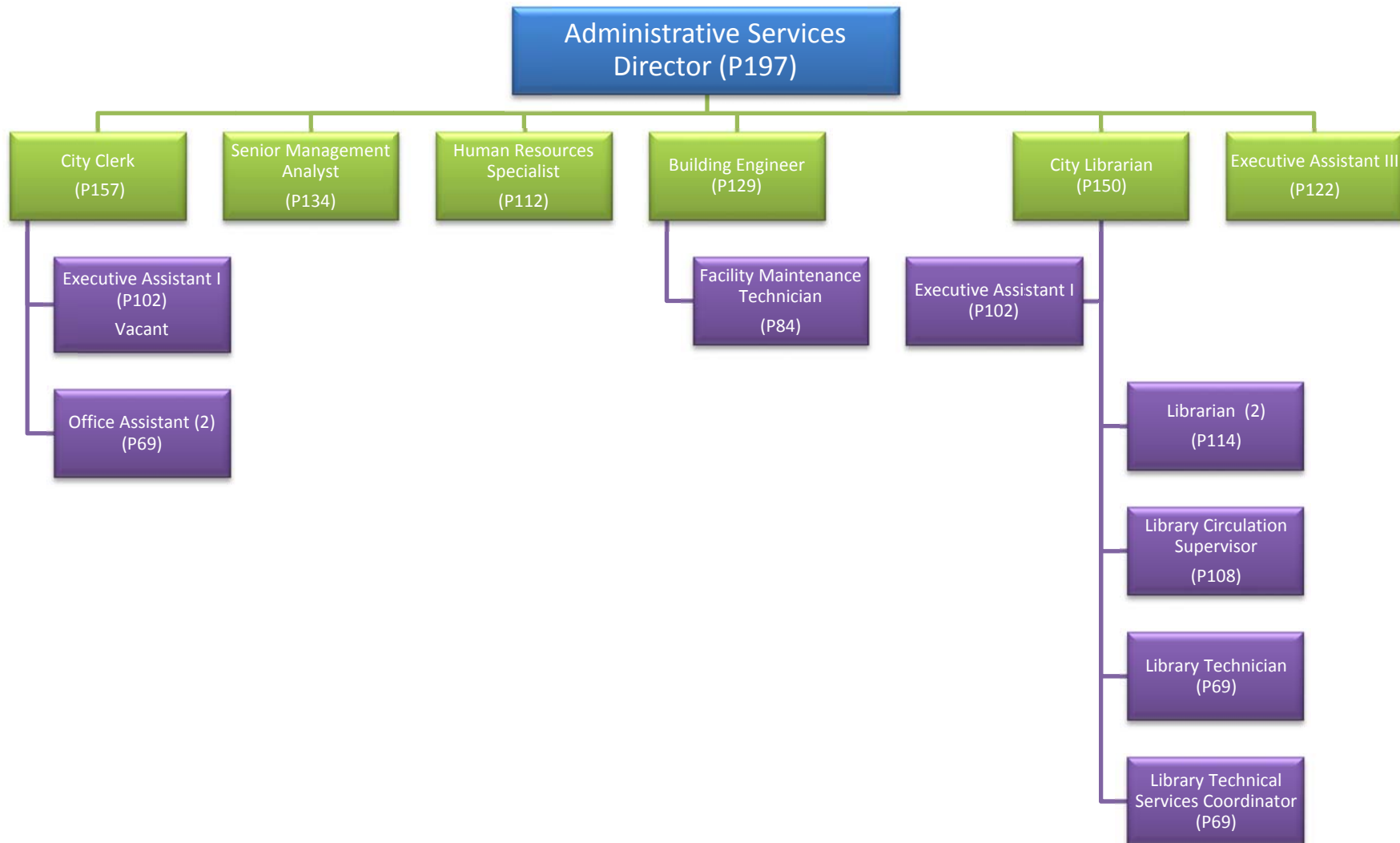


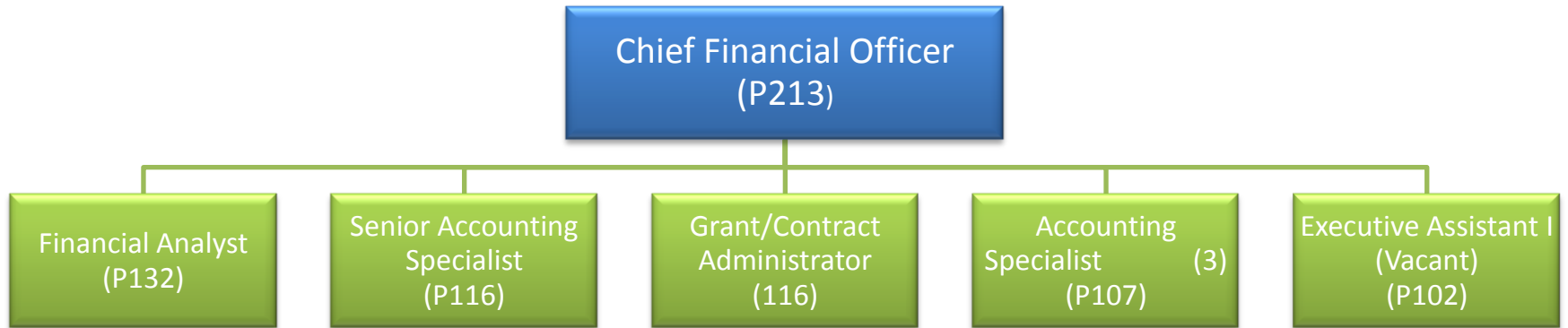
# CITY MANAGEMENT



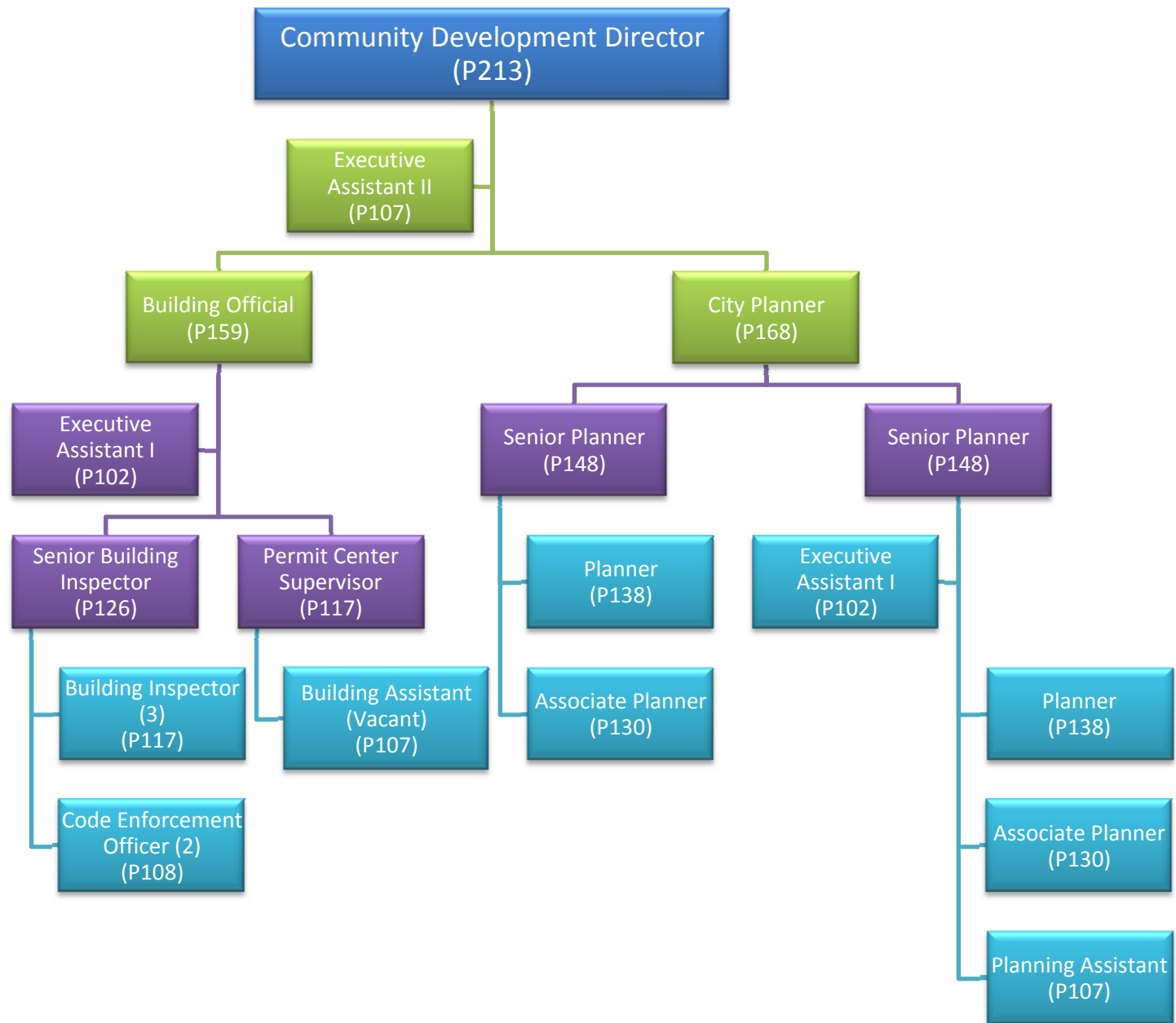
# ADMINISTRATIVE SERVICES DEPARTMENT



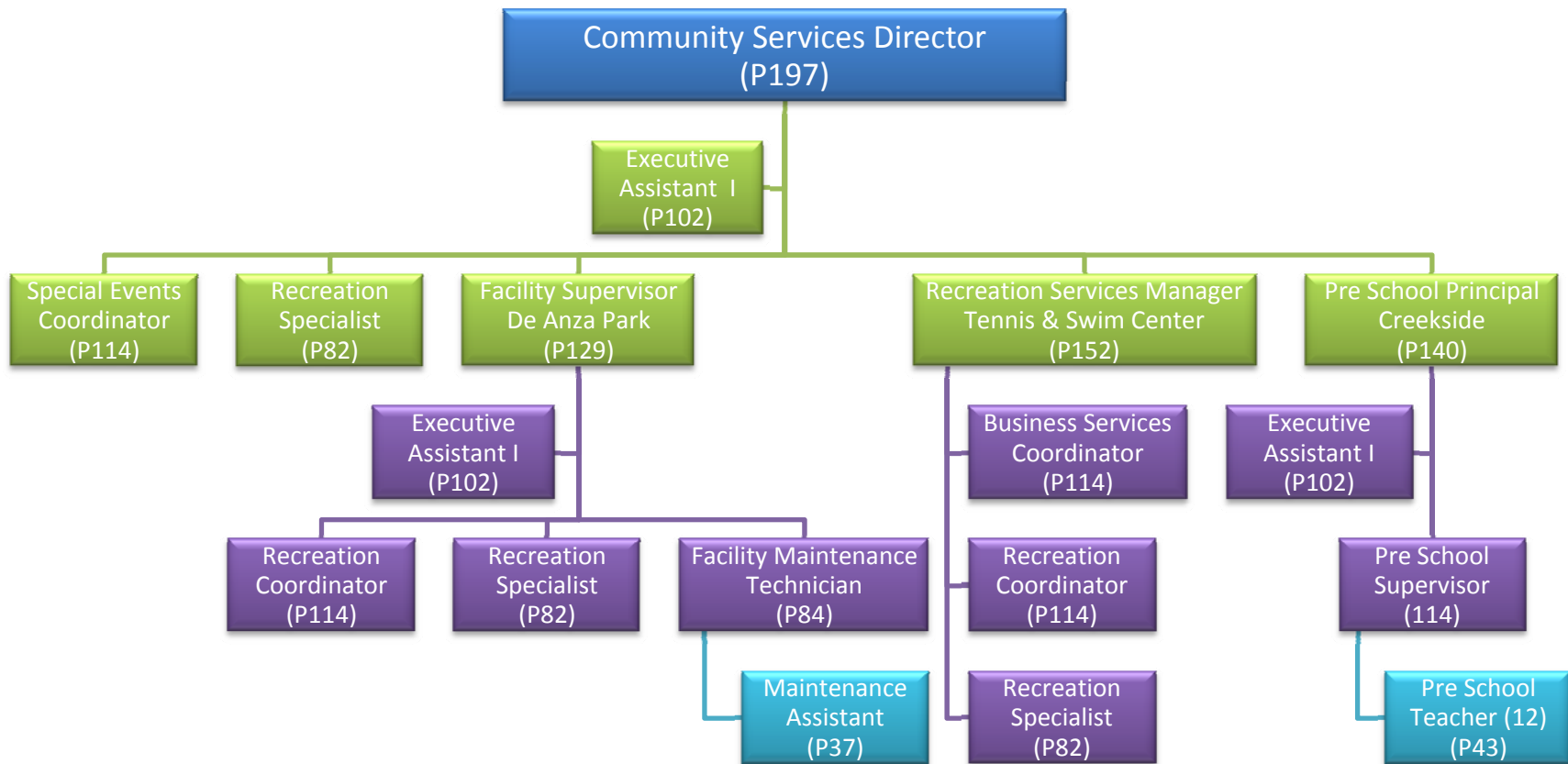
# FINANCE DEPARTMENT



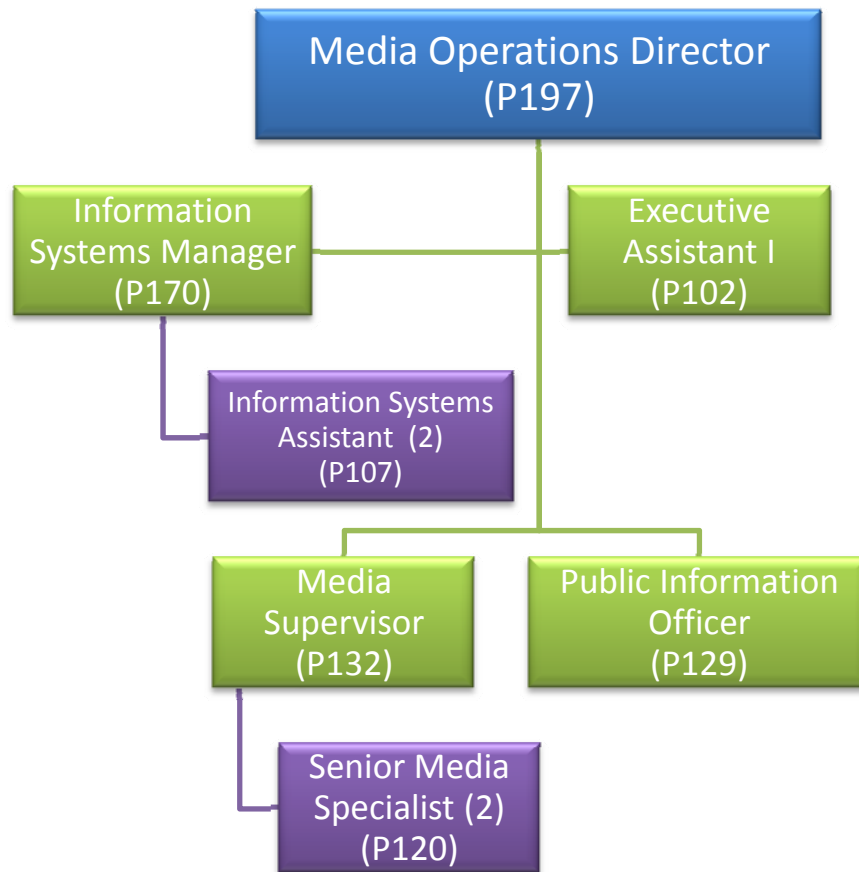
# COMMUNITY DEVELOPMENT DEPARTMENT



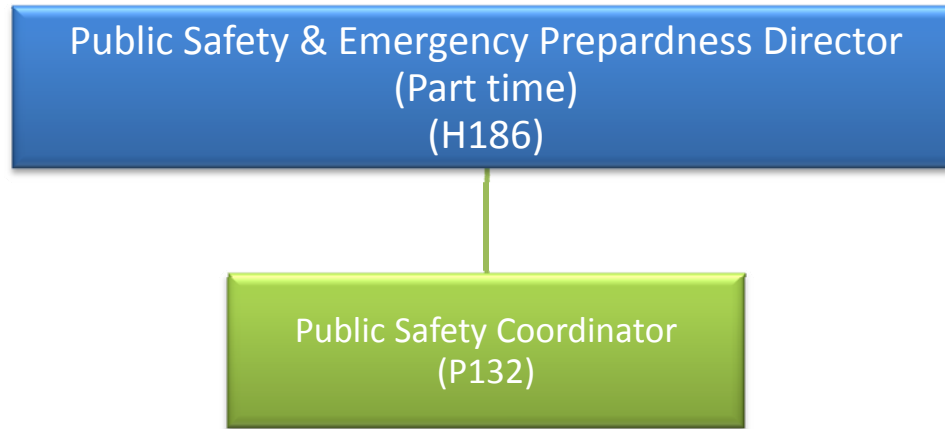
# COMMUNITY SERVICES DEPARTMENT



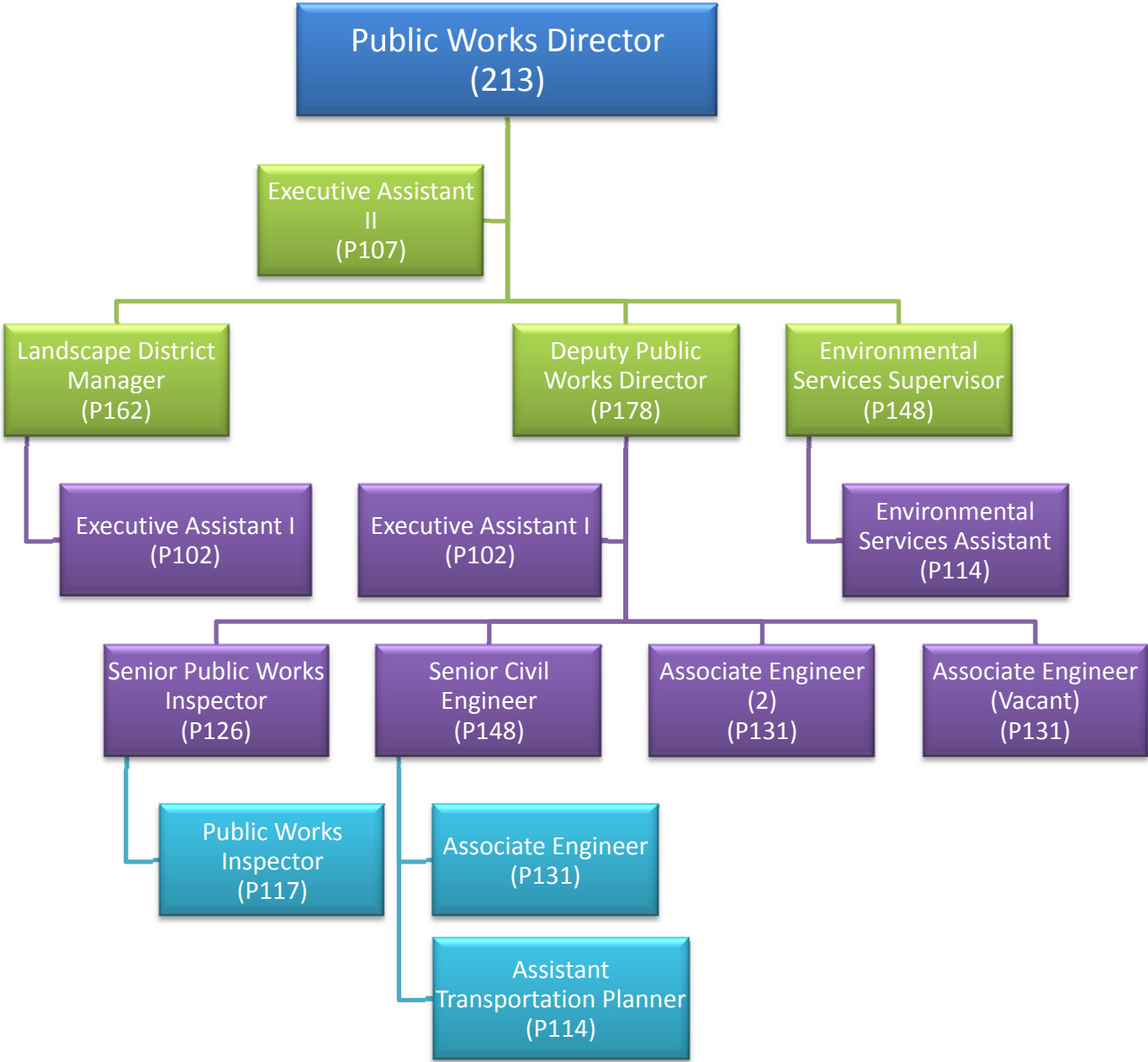
# MEDIA OPERATIONS DEPARTMENT



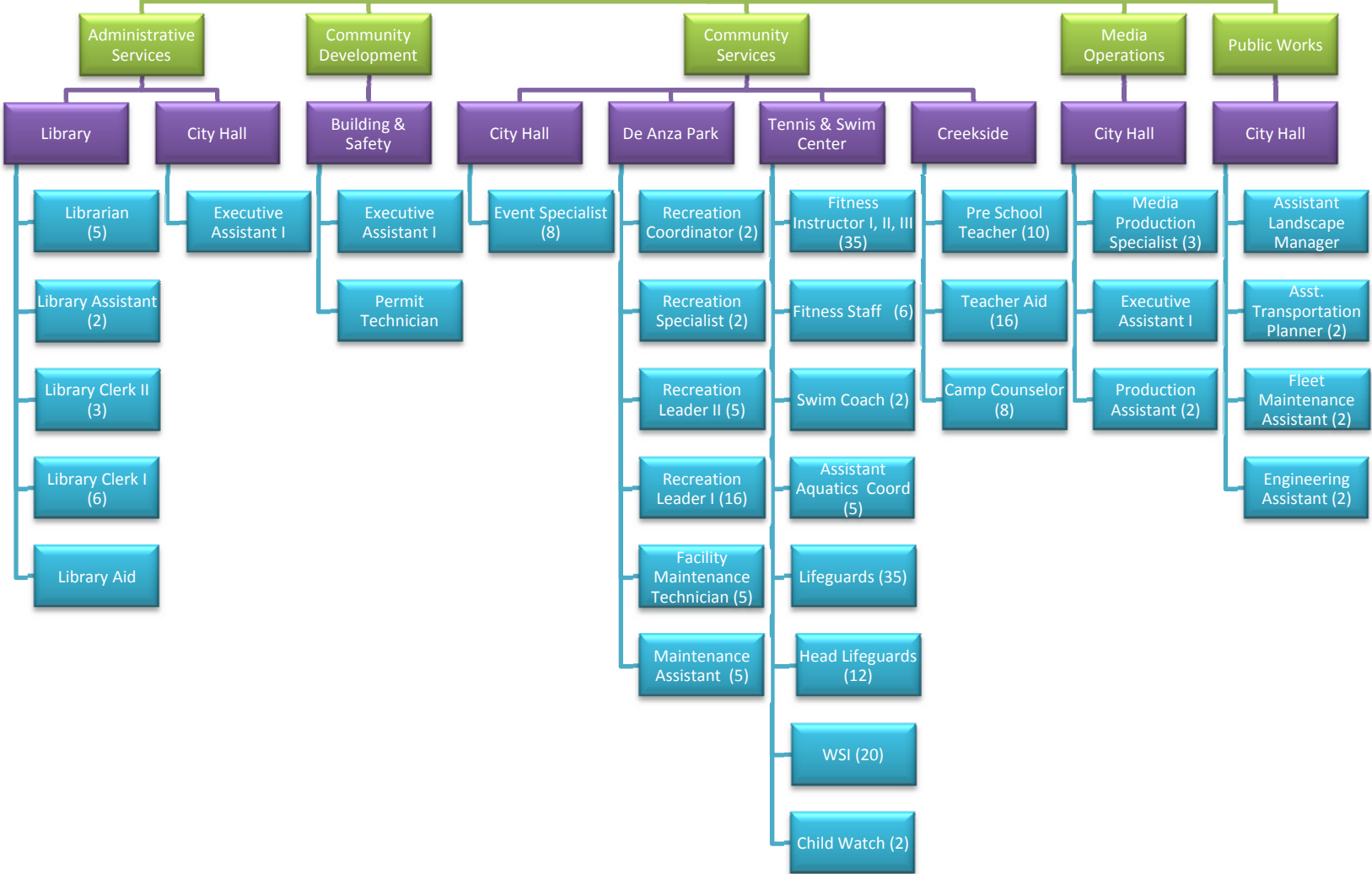
## PUBLIC SAFETY & EMERGENCY PREPARDNESS



# PUBLIC WORKS DEPARTMENT



# Part-time Employees



**CITY OF CALABASAS  
PERMANENT POSITIONS  
MONTHLY WAGE RANGE / STEP SCHEDULE  
Effective July 1, 2010**

<b>RANGE</b>	<b>STEP 1</b>	<b>STEP 2</b>	<b>STEP 3</b>	<b>STEP 4</b>	<b>STEP 5</b>	<b>STEP 6</b>	<b>STEP 7</b>	<b>STEP 8</b>	<b>STEP 9</b>	<b>STEP 10</b>
P1	1,409	1,444	1,480	1,517	1,555	1,594	1,634	1,675	1,717	1,760
P2	1,423	1,459	1,495	1,533	1,571	1,610	1,650	1,692	1,734	1,777
P3	1,437	1,473	1,510	1,548	1,587	1,626	1,667	1,709	1,751	1,795
P4	1,452	1,488	1,525	1,563	1,602	1,642	1,684	1,726	1,769	1,813
P5	1,466	1,503	1,540	1,579	1,618	1,659	1,700	1,743	1,786	1,831
P6	1,481	1,518	1,556	1,595	1,635	1,675	1,717	1,760	1,804	1,849
P7	1,496	1,533	1,571	1,611	1,651	1,692	1,735	1,778	1,822	1,868
P8	1,511	1,548	1,587	1,627	1,667	1,709	1,752	1,796	1,841	1,887
P9	1,526	1,564	1,603	1,643	1,684	1,726	1,769	1,814	1,859	1,905
P10	1,541	1,580	1,619	1,659	1,701	1,744	1,787	1,832	1,878	1,925
P11	1,556	1,595	1,635	1,676	1,718	1,761	1,805	1,850	1,896	1,944
P12	1,572	1,611	1,652	1,693	1,735	1,779	1,823	1,869	1,915	1,963
P13	1,588	1,627	1,668	1,710	1,753	1,796	1,841	1,887	1,934	1,983
P14	1,604	1,644	1,685	1,727	1,770	1,814	1,860	1,906	1,954	2,003
P15	1,620	1,660	1,702	1,744	1,788	1,832	1,878	1,925	1,973	2,023
P16	1,636	1,677	1,719	1,762	1,806	1,851	1,897	1,944	1,993	2,043
P17	1,652	1,693	1,736	1,779	1,824	1,869	1,916	1,964	2,013	2,063
P18	1,669	1,710	1,753	1,797	1,842	1,888	1,935	1,984	2,033	2,084
P19	1,685	1,728	1,771	1,815	1,860	1,907	1,955	2,003	2,053	2,105
P20	1,702	1,745	1,788	1,833	1,879	1,926	1,974	2,023	2,074	2,126
P21	1,719	1,762	1,806	1,851	1,898	1,945	1,994	2,044	2,095	2,147
P22	1,736	1,780	1,824	1,870	1,917	1,965	2,014	2,064	2,116	2,169
P23	1,754	1,798	1,843	1,889	1,936	1,984	2,034	2,085	2,137	2,190
P24	1,771	1,816	1,861	1,908	1,955	2,004	2,054	2,106	2,158	2,212
P25	1,789	1,834	1,880	1,927	1,975	2,024	2,075	2,127	2,180	2,234
P26	1,807	1,852	1,898	1,946	1,995	2,044	2,096	2,148	2,202	2,257
P27	1,825	1,871	1,917	1,965	2,014	2,065	2,116	2,169	2,224	2,279
P28	1,843	1,889	1,937	1,985	2,035	2,085	2,138	2,191	2,246	2,302
P29	1,862	1,908	1,956	2,005	2,055	2,106	2,159	2,213	2,268	2,325
P30	1,880	1,927	1,976	2,025	2,076	2,127	2,181	2,235	2,291	2,348
P31	1,899	1,947	1,995	2,045	2,096	2,149	2,202	2,257	2,314	2,372
P32	1,918	1,966	2,015	2,066	2,117	2,170	2,224	2,280	2,337	2,395
P33	1,937	1,986	2,035	2,086	2,138	2,192	2,247	2,303	2,360	2,419
P34	1,957	2,006	2,056	2,107	2,160	2,214	2,269	2,326	2,384	2,444
P35	1,976	2,026	2,076	2,128	2,181	2,236	2,292	2,349	2,408	2,468
P36	1,996	2,046	2,097	2,149	2,203	2,258	2,315	2,373	2,432	2,493
P37	2,016	2,066	2,118	2,171	2,225	2,281	2,338	2,396	2,456	2,518
P38	2,036	2,087	2,139	2,193	2,247	2,304	2,361	2,420	2,481	2,543
P39	2,056	2,108	2,161	2,215	2,270	2,327	2,385	2,445	2,506	2,568
P40	2,077	2,129	2,182	2,237	2,293	2,350	2,409	2,469	2,531	2,594
P41	2,098	2,150	2,204	2,259	2,316	2,373	2,433	2,494	2,556	2,620
P42	2,119	2,172	2,226	2,282	2,339	2,397	2,457	2,519	2,582	2,646
P43	2,140	2,193	2,248	2,305	2,362	2,421	2,482	2,544	2,607	2,673
P44	2,161	2,215	2,271	2,328	2,386	2,445	2,507	2,569	2,633	2,699
P45	2,183	2,238	2,294	2,351	2,410	2,470	2,532	2,595	2,660	2,726
P46	2,205	2,260	2,316	2,374	2,434	2,495	2,557	2,621	2,686	2,754
P47	2,227	2,283	2,340	2,398	2,458	2,519	2,582	2,647	2,713	2,781
P48	2,249	2,305	2,363	2,422	2,483	2,545	2,608	2,674	2,740	2,809
P49	2,272	2,328	2,387	2,446	2,507	2,570	2,634	2,700	2,768	2,837
P50	2,294	2,352	2,410	2,471	2,533	2,596	2,661	2,727	2,795	2,865

**CITY OF CALABASAS  
PERMANENT POSITIONS  
MONTHLY WAGE RANGE / STEP SCHEDULE  
Effective July 1, 2010**

<b>RANGE</b>	<b>STEP 1</b>	<b>STEP 2</b>	<b>STEP 3</b>	<b>STEP 4</b>	<b>STEP 5</b>	<b>STEP 6</b>	<b>STEP 7</b>	<b>STEP 8</b>	<b>STEP 9</b>	<b>STEP 10</b>
P51	2,317	2,375	2,435	2,495	2,558	2,622	2,687	2,755	2,823	2,894
P52	2,340	2,399	2,459	2,520	2,583	2,648	2,714	2,782	2,852	2,923
P53	2,364	2,423	2,484	2,546	2,609	2,674	2,741	2,810	2,880	2,952
P54	2,388	2,447	2,508	2,571	2,635	2,701	2,769	2,838	2,909	2,982
P55	2,411	2,472	2,533	2,597	2,662	2,728	2,796	2,866	2,938	3,011
P56	2,435	2,496	2,559	2,623	2,688	2,756	2,824	2,895	2,967	3,042
P57	2,460	2,521	2,584	2,649	2,715	2,783	2,853	2,924	2,997	3,072
P58	2,484	2,547	2,610	2,675	2,742	2,811	2,881	2,953	3,027	3,103
P59	2,509	2,572	2,636	2,702	2,770	2,839	2,910	2,983	3,057	3,134
P60	2,534	2,598	2,663	2,729	2,797	2,867	2,939	3,013	3,088	3,165
P61	2,560	2,624	2,689	2,757	2,825	2,896	2,968	3,043	3,119	3,197
P62	2,585	2,650	2,716	2,784	2,854	2,925	2,998	3,073	3,150	3,229
P63	2,611	2,676	2,743	2,812	2,882	2,954	3,028	3,104	3,181	3,261
P64	2,637	2,703	2,771	2,840	2,911	2,984	3,058	3,135	3,213	3,294
P65	2,664	2,730	2,799	2,868	2,940	3,014	3,089	3,166	3,245	3,327
P66	2,690	2,758	2,826	2,897	2,970	3,044	3,120	3,198	3,278	3,360
P67	2,717	2,785	2,855	2,926	2,999	3,074	3,151	3,230	3,311	3,393
P68	2,744	2,813	2,883	2,955	3,029	3,105	3,183	3,262	3,344	3,427
P69	2,772	2,841	2,912	2,985	3,060	3,136	3,214	3,295	3,377	3,462
P70	2,800	2,870	2,941	3,015	3,090	3,167	3,247	3,328	3,411	3,496
P71	2,828	2,898	2,971	3,045	3,121	3,199	3,279	3,361	3,445	3,531
P72	2,856	2,927	3,000	3,075	3,152	3,231	3,312	3,395	3,480	3,567
P73	2,884	2,956	3,030	3,106	3,184	3,263	3,345	3,429	3,514	3,602
P74	2,913	2,986	3,061	3,137	3,216	3,296	3,378	3,463	3,549	3,638
P75	2,942	3,016	3,091	3,169	3,248	3,329	3,412	3,498	3,585	3,675
P76	2,972	3,046	3,122	3,200	3,280	3,362	3,446	3,532	3,621	3,711
P77	3,001	3,077	3,153	3,232	3,313	3,396	3,481	3,568	3,657	3,748
P78	3,031	3,107	3,185	3,265	3,346	3,430	3,516	3,603	3,694	3,786
P79	3,062	3,138	3,217	3,297	3,380	3,464	3,551	3,640	3,731	3,824
P80	3,092	3,170	3,249	3,330	3,413	3,499	3,586	3,676	3,768	3,862
P81	3,123	3,201	3,281	3,364	3,448	3,534	3,622	3,713	3,806	3,901
P82	3,155	3,233	3,314	3,397	3,482	3,569	3,658	3,750	3,844	3,940
P83	3,186	3,266	3,347	3,431	3,517	3,605	3,695	3,787	3,882	3,979
P84	3,218	3,298	3,381	3,465	3,552	3,641	3,732	3,825	3,921	4,019
P85	3,250	3,331	3,415	3,500	3,588	3,677	3,769	3,863	3,960	4,059
P86	3,283	3,365	3,449	3,535	3,623	3,714	3,807	3,902	4,000	4,100
P87	3,316	3,398	3,483	3,570	3,660	3,751	3,845	3,941	4,040	4,141
P88	3,349	3,432	3,518	3,606	3,696	3,789	3,883	3,980	4,080	4,182
P89	3,382	3,467	3,553	3,642	3,733	3,827	3,922	4,020	4,121	4,224
P90	3,416	3,501	3,589	3,679	3,771	3,865	3,961	4,061	4,162	4,266
P91	3,450	3,536	3,625	3,715	3,808	3,903	4,001	4,101	4,204	4,309
P92	3,485	3,572	3,661	3,753	3,846	3,943	4,041	4,142	4,246	4,352
P93	3,519	3,607	3,698	3,790	3,885	3,982	4,082	4,184	4,288	4,395
P94	3,555	3,644	3,735	3,828	3,924	4,022	4,122	4,225	4,331	4,439
P95	3,590	3,680	3,772	3,866	3,963	4,062	4,164	4,268	4,374	4,484
P96	3,626	3,717	3,810	3,905	4,003	4,103	4,205	4,310	4,418	4,529
P97	3,662	3,754	3,848	3,944	4,043	4,144	4,247	4,353	4,462	4,574
P98	3,699	3,791	3,886	3,983	4,083	4,185	4,290	4,397	4,507	4,620
P99	3,736	3,829	3,925	4,023	4,124	4,227	4,333	4,441	4,552	4,666
P100	3,773	3,868	3,964	4,063	4,165	4,269	4,376	4,485	4,597	4,712

**CITY OF CALABASAS  
PERMANENT POSITIONS  
MONTHLY WAGE RANGE / STEP SCHEDULE  
Effective July 1, 2010**

<b>RANGE</b>	<b>STEP 1</b>	<b>STEP 2</b>	<b>STEP 3</b>	<b>STEP 4</b>	<b>STEP 5</b>	<b>STEP 6</b>	<b>STEP 7</b>	<b>STEP 8</b>	<b>STEP 9</b>	<b>STEP 10</b>
P101	3,811	3,906	4,004	4,104	4,207	4,312	4,420	4,530	4,643	4,760
P102	3,849	3,945	4,044	4,145	4,249	4,355	4,464	4,575	4,690	4,807
P103	3,888	3,985	4,084	4,187	4,291	4,399	4,509	4,621	4,737	4,855
P104	3,927	4,025	4,125	4,228	4,334	4,443	4,554	4,667	4,784	4,904
P105	3,966	4,065	4,167	4,271	4,378	4,487	4,599	4,714	4,832	4,953
P106	4,005	4,106	4,208	4,313	4,421	4,532	4,645	4,761	4,880	5,002
P107	4,046	4,147	4,250	4,357	4,466	4,577	4,692	4,809	4,929	5,052
P108	4,086	4,188	4,293	4,400	4,510	4,623	4,739	4,857	4,978	5,103
P109	4,127	4,230	4,336	4,444	4,555	4,669	4,786	4,906	5,028	5,154
P110	4,168	4,272	4,379	4,489	4,601	4,716	4,834	4,955	5,078	5,205
P111	4,210	4,315	4,423	4,534	4,647	4,763	4,882	5,004	5,129	5,257
P112	4,252	4,358	4,467	4,579	4,693	4,811	4,931	5,054	5,181	5,310
P113	4,294	4,402	4,512	4,625	4,740	4,859	4,980	5,105	5,232	5,363
P114	4,337	4,446	4,557	4,671	4,788	4,907	5,030	5,156	5,285	5,417
P115	4,381	4,490	4,603	4,718	4,836	4,956	5,080	5,207	5,338	5,471
P116	4,425	4,535	4,649	4,765	4,884	5,006	5,131	5,259	5,391	5,526
P117	4,469	4,581	4,695	4,812	4,933	5,056	5,182	5,312	5,445	5,581
P118	4,513	4,626	4,742	4,861	4,982	5,107	5,234	5,365	5,499	5,637
P119	4,559	4,673	4,789	4,909	5,032	5,158	5,287	5,419	5,554	5,693
P120	4,604	4,719	4,837	4,958	5,082	5,209	5,339	5,473	5,610	5,750
P121	4,650	4,767	4,886	5,008	5,133	5,261	5,393	5,528	5,666	5,808
P122	4,697	4,814	4,935	5,058	5,184	5,314	5,447	5,583	5,723	5,866
P123	4,744	4,862	4,984	5,108	5,236	5,367	5,501	5,639	5,780	5,924
P124	4,791	4,911	5,034	5,160	5,289	5,421	5,556	5,695	5,838	5,983
P125	4,839	4,960	5,084	5,211	5,341	5,475	5,612	5,752	5,896	6,043
P126	4,887	5,010	5,135	5,263	5,395	5,530	5,668	5,810	5,955	6,104
P127	4,936	5,060	5,186	5,316	5,449	5,585	5,725	5,868	6,014	6,165
P128	4,986	5,110	5,238	5,369	5,503	5,641	5,782	5,926	6,075	6,226
P129	5,036	5,161	5,290	5,423	5,558	5,697	5,840	5,986	6,135	6,289
P130	5,086	5,213	5,343	5,477	5,614	5,754	5,898	6,046	6,197	6,352
P131	5,137	5,265	5,397	5,532	5,670	5,812	5,957	6,106	6,259	6,415
P132	5,188	5,318	5,451	5,587	5,727	5,870	6,017	6,167	6,321	6,479
P133	5,240	5,371	5,505	5,643	5,784	5,929	6,077	6,229	6,384	6,544
P134	5,292	5,425	5,560	5,699	5,842	5,988	6,138	6,291	6,448	6,609
P135	5,345	5,479	5,616	5,756	5,900	6,048	6,199	6,354	6,513	6,676
P136	5,399	5,534	5,672	5,814	5,959	6,108	6,261	6,417	6,578	6,742
P137	5,453	5,589	5,729	5,872	6,019	6,169	6,324	6,482	6,644	6,810
P138	5,507	5,645	5,786	5,931	6,079	6,231	6,387	6,546	6,710	6,878
P139	5,562	5,701	5,844	5,990	6,140	6,293	6,451	6,612	6,777	6,947
P140	5,618	5,758	5,902	6,050	6,201	6,356	6,515	6,678	6,845	7,016
P141	5,674	5,816	5,961	6,110	6,263	6,420	6,580	6,745	6,913	7,086
P142	5,731	5,874	6,021	6,172	6,326	6,484	6,646	6,812	6,983	7,157
P143	5,788	5,933	6,081	6,233	6,389	6,549	6,713	6,880	7,052	7,229
P144	5,846	5,992	6,142	6,296	6,453	6,614	6,780	6,949	7,123	7,301
P145	5,905	6,052	6,203	6,359	6,518	6,680	6,847	7,019	7,194	7,374
P146	5,964	6,113	6,266	6,422	6,583	6,747	6,916	7,089	7,266	7,448
P147	6,023	6,174	6,328	6,486	6,649	6,815	6,985	7,160	7,339	7,522
P148	6,083	6,236	6,391	6,551	6,715	6,883	7,055	7,231	7,412	7,597
P149	6,144	6,298	6,455	6,617	6,782	6,952	7,126	7,304	7,486	7,673
P150	6,206	6,361	6,520	6,683	6,850	7,021	7,197	7,377	7,561	7,750

**CITY OF CALABASAS  
PERMANENT POSITIONS  
MONTHLY WAGE RANGE / STEP SCHEDULE  
Effective July 1, 2010**

<b>RANGE</b>	<b>STEP 1</b>	<b>STEP 2</b>	<b>STEP 3</b>	<b>STEP 4</b>	<b>STEP 5</b>	<b>STEP 6</b>	<b>STEP 7</b>	<b>STEP 8</b>	<b>STEP 9</b>	<b>STEP 10</b>
P151	6,268	6,425	6,585	6,750	6,919	7,091	7,269	7,450	7,637	7,828
P152	6,331	6,489	6,651	6,817	6,988	7,162	7,341	7,525	7,713	7,906
P153	6,394	6,554	6,717	6,885	7,058	7,234	7,415	7,600	7,790	7,985
P154	6,458	6,619	6,785	6,954	7,128	7,306	7,489	7,676	7,868	8,065
P155	6,522	6,685	6,853	7,024	7,199	7,379	7,564	7,753	7,947	8,145
P156	6,588	6,752	6,921	7,094	7,271	7,453	7,640	7,831	8,026	8,227
P157	6,653	6,820	6,990	7,165	7,344	7,528	7,716	7,909	8,107	8,309
P158	6,720	6,888	7,060	7,237	7,418	7,603	7,793	7,988	8,188	8,392
P159	6,787	6,957	7,131	7,309	7,492	7,679	7,871	8,068	8,269	8,476
P160	6,855	7,026	7,202	7,382	7,567	7,756	7,950	8,148	8,352	8,561
P161	6,924	7,097	7,274	7,456	7,642	7,833	8,029	8,230	8,436	8,647
P162	6,993	7,168	7,347	7,530	7,719	7,912	8,110	8,312	8,520	8,733
P163	7,063	7,239	7,420	7,606	7,796	7,991	8,191	8,395	8,605	8,820
P164	7,133	7,312	7,494	7,682	7,874	8,071	8,273	8,479	8,691	8,909
P165	7,205	7,385	7,569	7,759	7,953	8,151	8,355	8,564	8,778	8,998
P166	7,277	7,459	7,645	7,836	8,032	8,233	8,439	8,650	8,866	9,088
P167	7,350	7,533	7,722	7,915	8,112	8,315	8,523	8,736	8,955	9,179
P168	7,423	7,609	7,799	7,994	8,194	8,398	8,608	8,824	9,044	9,270
P169	7,497	7,685	7,877	8,074	8,276	8,482	8,695	8,912	9,135	9,363
P170	7,572	7,762	7,956	8,154	8,358	8,567	8,781	9,001	9,226	9,457
P171	7,648	7,839	8,035	8,236	8,442	8,653	8,869	9,091	9,318	9,551
P172	7,724	7,918	8,115	8,318	8,526	8,739	8,958	9,182	9,411	9,647
P173	7,802	7,997	8,197	8,402	8,612	8,827	9,048	9,274	9,506	9,743
P174	7,880	8,077	8,279	8,486	8,698	8,915	9,138	9,366	9,601	9,841
P175	7,958	8,157	8,361	8,570	8,785	9,004	9,229	9,460	9,697	9,939
P176	8,038	8,239	8,445	8,656	8,873	9,094	9,322	9,555	9,794	10,038
P177	8,118	8,321	8,529	8,743	8,961	9,185	9,415	9,650	9,892	10,139
P178	8,200	8,405	8,615	8,830	9,051	9,277	9,509	9,747	9,990	10,240
P179	8,282	8,489	8,701	8,918	9,141	9,370	9,604	9,844	10,090	10,343
P180	8,364	8,574	8,788	9,008	9,233	9,464	9,700	9,943	10,191	10,446
P181	8,448	8,659	8,876	9,098	9,325	9,558	9,797	10,042	10,293	10,551
P182	8,533	8,746	8,965	9,189	9,418	9,654	9,895	10,143	10,396	10,656
P183	8,618	8,833	9,054	9,281	9,513	9,750	9,994	10,244	10,500	10,763
P184	8,704	8,922	9,145	9,373	9,608	9,848	10,094	10,346	10,605	10,870
P185	8,791	9,011	9,236	9,467	9,704	9,946	10,195	10,450	10,711	10,979
P186	8,879	9,101	9,329	9,562	9,801	10,046	10,297	10,554	10,818	11,089
P187	8,968	9,192	9,422	9,657	9,899	10,146	10,400	10,660	10,926	11,200
P188	9,057	9,284	9,516	9,754	9,998	10,248	10,504	10,767	11,036	11,312
P189	9,148	9,377	9,611	9,851	10,098	10,350	10,609	10,874	11,146	11,425
P190	9,240	9,471	9,707	9,950	10,199	10,454	10,715	10,983	11,257	11,539
P191	9,332	9,565	9,804	10,049	10,301	10,558	10,822	11,093	11,370	11,654
P192	9,425	9,661	9,902	10,150	10,404	10,664	10,930	11,204	11,484	11,771
P193	9,520	9,758	10,001	10,251	10,508	10,770	11,040	11,316	11,599	11,889
P194	9,615	9,855	10,101	10,354	10,613	10,878	11,150	11,429	11,715	12,007
P195	9,711	9,954	10,202	10,458	10,719	10,987	11,262	11,543	11,832	12,128
P196	9,808	10,053	10,304	10,562	10,826	11,097	11,374	11,659	11,950	12,249
P197	9,906	10,154	10,408	10,668	10,934	11,208	11,488	11,775	12,070	12,371
P198	10,005	10,255	10,512	10,774	11,044	11,320	11,603	11,893	12,190	12,495
P199	10,105	10,358	10,617	10,882	11,154	11,433	11,719	12,012	12,312	12,620
P200	10,206	10,461	10,723	10,991	11,266	11,547	11,836	12,132	12,435	12,746

**CITY OF CALABASAS  
PERMANENT POSITIONS  
MONTHLY WAGE RANGE / STEP SCHEDULE  
Effective July 1, 2010**

<b>RANGE</b>	<b>STEP 1</b>	<b>STEP 2</b>	<b>STEP 3</b>	<b>STEP 4</b>	<b>STEP 5</b>	<b>STEP 6</b>	<b>STEP 7</b>	<b>STEP 8</b>	<b>STEP 9</b>	<b>STEP 10</b>
P201	10,308	10,566	10,830	11,101	11,378	11,663	11,954	12,253	12,560	12,874
P202	10,411	10,672	10,938	11,212	11,492	11,779	12,074	12,376	12,685	13,002
P203	10,515	10,778	11,048	11,324	11,607	11,897	12,195	12,500	12,812	13,132
P204	10,621	10,886	11,158	11,437	11,723	12,016	12,317	12,625	12,940	13,264
P205	10,727	10,995	11,270	11,552	11,840	12,136	12,440	12,751	13,070	13,396
P206	10,834	11,105	11,383	11,667	11,959	12,258	12,564	12,878	13,200	13,530
P207	10,942	11,216	11,496	11,784	12,078	12,380	12,690	13,007	13,332	13,666
P208	11,052	11,328	11,611	11,902	12,199	12,504	12,817	13,137	13,466	13,802
P209	11,162	11,441	11,727	12,021	12,321	12,629	12,945	13,269	13,600	13,940
P210	11,274	11,556	11,845	12,141	12,444	12,755	13,074	13,401	13,736	14,080
P211	11,387	11,671	11,963	12,262	12,569	12,883	13,205	13,535	13,874	14,220
P212	11,501	11,788	12,083	12,385	12,695	13,012	13,337	13,671	14,012	14,363
P213	11,616	11,906	12,204	12,509	12,821	13,142	13,471	13,807	14,152	14,506
P214	11,732	12,025	12,326	12,634	12,950	13,273	13,605	13,945	14,294	14,651
P215	11,849	12,145	12,449	12,760	13,079	13,406	13,741	14,085	14,437	14,798
P216	11,968	12,267	12,573	12,888	13,210	13,540	13,879	14,226	14,581	14,946
P217	12,087	12,389	12,699	13,017	13,342	13,676	14,018	14,368	14,727	15,095
P218	12,208	12,513	12,826	13,147	13,475	13,812	14,158	14,512	14,874	15,246
P219	12,330	12,638	12,954	13,278	13,610	13,951	14,299	14,657	15,023	15,399
P220	12,454	12,765	13,084	13,411	13,746	14,090	14,442	14,803	15,173	15,553
P221	12,578	12,892	13,215	13,545	13,884	14,231	14,587	14,951	15,325	15,708
P222	12,704	13,021	13,347	13,681	14,023	14,373	14,733	15,101	15,478	15,865
P223	12,831	13,152	13,480	13,817	14,163	14,517	14,880	15,252	15,633	16,024
P224	12,959	13,283	13,615	13,956	14,305	14,662	15,029	15,404	15,789	16,184
P225	13,089	13,416	13,751	14,095	14,448	14,809	15,179	15,558	15,947	16,346
P226	13,220	13,550	13,889	14,236	14,592	14,957	15,331	15,714	16,107	16,510
P227	13,352	13,686	14,028	14,378	14,738	15,106	15,484	15,871	16,268	16,675
P228	13,485	13,823	14,168	14,522	14,885	15,257	15,639	16,030	16,431	16,841
P229	13,620	13,961	14,310	14,667	15,034	15,410	15,795	16,190	16,595	17,010
P230	13,756	14,100	14,453	14,814	15,185	15,564	15,953	16,352	16,761	17,180
P231	13,894	14,241	14,597	14,962	15,336	15,720	16,113	16,516	16,928	17,352
P232	14,033	14,384	14,743	15,112	15,490	15,877	16,274	16,681	17,098	17,525
P233	14,173	14,528	14,891	15,263	15,645	16,036	16,437	16,848	17,269	17,700
P234	14,315	14,673	15,040	15,416	15,801	16,196	16,601	17,016	17,441	17,877
P235	14,458	14,820	15,190	15,570	15,959	16,358	16,767	17,186	17,616	18,056
P236	14,603	14,968	15,342	15,726	16,119	16,522	16,935	17,358	17,792	18,237
P237	14,749	15,117	15,495	15,883	16,280	16,687	17,104	17,532	17,970	18,419
P238	14,896	15,269	15,650	16,042	16,443	16,854	17,275	17,707	18,150	18,603
P239	15,045	15,421	15,807	16,202	16,607	17,022	17,448	17,884	18,331	18,789
P240	15,196	15,576	15,965	16,364	16,773	17,192	17,622	18,063	18,514	18,977
P241	15,348	15,731	16,125	16,528	16,941	17,364	17,799	18,243	18,700	19,167
P242	15,501	15,889	16,286	16,693	17,110	17,538	17,977	18,426	18,887	19,359
P243	15,656	16,047	16,449	16,860	17,281	17,713	18,156	18,610	19,075	19,552
P244	15,813	16,208	16,613	17,029	17,454	17,891	18,338	18,796	19,266	19,748
P245	15,971	16,370	16,779	17,199	17,629	18,069	18,521	18,984	19,459	19,945
P246	16,130	16,534	16,947	17,371	17,805	18,250	18,706	19,174	19,653	20,145
P247	16,292	16,699	17,117	17,544	17,983	18,433	18,893	19,366	19,850	20,346
P248	16,455	16,866	17,288	17,720	18,163	18,617	19,082	19,559	20,048	20,550

**CITY OF CALABASAS  
HOURLY POSITIONS  
HOURLY WAGE RANGE / STEP SCHEDULE  
Effective July 1, 2009**

RANGE	STEP 1	STEP 2	STEP 3	STEP 4	STEP 5	STEP 6	STEP 7	STEP 8	STEP 9	STEP 10
H1	8.06	8.26	8.47	8.68	8.90	9.13	9.36	9.59	9.84	10.08
H2	8.14	8.34	8.56	8.77	8.99	9.22	9.45	9.69	9.93	10.18
H3	8.22	8.42	8.64	8.86	9.08	9.31	9.54	9.79	10.03	10.29
H4	8.30	8.51	8.73	8.94	9.17	9.40	9.64	9.89	10.13	10.39
H5	8.38	8.60	8.82	9.03	9.27	9.50	9.74	9.99	10.23	10.49
H6	8.47	8.68	8.90	9.13	9.36	9.59	9.84	10.08	10.34	10.60
H7	8.56	8.77	8.99	9.22	9.45	9.69	9.93	10.18	10.44	10.70
H8	8.64	8.86	9.08	9.31	9.54	9.78	10.03	10.29	10.55	10.81
H9	8.73	8.94	9.17	9.40	9.64	9.88	10.13	10.39	10.65	10.92
H10	8.82	9.03	9.27	9.50	9.74	9.98	10.23	10.49	10.75	11.03
H11	8.90	9.13	9.36	9.59	9.84	10.08	10.34	10.60	10.86	11.14
H12	8.99	9.22	9.45	9.69	9.93	10.18	10.44	10.70	10.97	11.25
H13	9.08	9.31	9.54	9.78	10.03	10.28	10.55	10.81	11.08	11.37
H14	9.17	9.40	9.64	9.88	10.13	10.38	10.65	10.92	11.19	11.48
H15	9.27	9.50	9.74	9.98	10.23	10.49	10.75	11.03	11.30	11.60
H16	9.36	9.59	9.84	10.08	10.34	10.59	10.86	11.14	11.42	11.71
H17	9.45	9.69	9.93	10.18	10.44	10.70	10.97	11.25	11.53	11.83
H18	9.54	9.78	10.03	10.28	10.55	10.81	11.08	11.37	11.65	11.95
H19	9.64	9.88	10.13	10.38	10.65	10.92	11.19	11.48	11.76	12.07
H20	9.74	9.98	10.23	10.49	10.75	11.03	11.30	11.60	11.88	12.19
H21	9.84	10.08	10.34	10.59	10.86	11.13	11.42	11.71	12.00	12.31
H22	9.93	10.18	10.44	10.70	10.97	11.24	11.53	11.83	12.12	12.43
H23	10.03	10.28	10.55	10.81	11.08	11.35	11.65	11.95	12.24	12.56
H24	10.13	10.38	10.65	10.92	11.19	11.47	11.76	12.07	12.36	12.69
H25	10.23	10.49	10.75	11.03	11.30	11.58	11.88	12.19	12.48	12.81
H26	10.34	10.59	10.86	11.13	11.42	11.70	12.00	12.31	12.61	12.94
H27	10.44	10.70	10.97	11.24	11.53	11.82	12.12	12.43	12.74	13.07
H28	10.55	10.81	11.08	11.35	11.65	11.93	12.24	12.56	12.87	13.20
H29	10.65	10.92	11.19	11.47	11.76	12.05	12.36	12.69	12.99	13.33
H30	10.75	11.03	11.30	11.58	11.88	12.17	12.48	12.81	13.13	13.47
H31	10.86	11.13	11.42	11.70	12.00	12.29	12.61	12.94	13.26	13.60
H32	10.97	11.24	11.53	11.82	12.12	12.42	12.74	13.07	13.39	13.74
H33	11.08	11.35	11.65	11.93	12.24	12.54	12.87	13.20	13.52	13.88
H34	11.19	11.47	11.76	12.05	12.36	12.67	12.99	13.33	13.66	14.01
H35	11.30	11.58	11.88	12.17	12.48	12.80	13.13	13.47	13.79	14.15
H36	11.42	11.70	12.00	12.29	12.61	12.92	13.26	13.60	13.93	14.30
H37	11.53	11.82	12.12	12.42	12.74	13.05	13.39	13.74	14.07	14.44
H38	11.65	11.93	12.24	12.54	12.87	13.18	13.52	13.88	14.21	14.58
H39	11.76	12.05	12.36	12.67	12.99	13.32	13.66	14.01	14.35	14.73
H40	11.88	12.17	12.48	12.80	13.13	13.45	13.79	14.15	14.50	14.88
H41	12.00	12.29	12.61	12.92	13.26	13.58	13.93	14.30	14.64	15.03
H42	12.12	12.42	12.74	13.05	13.39	13.72	14.07	14.44	14.79	15.18
H43	12.24	12.54	12.87	13.18	13.52	13.86	14.21	14.58	14.94	15.33
H44	12.36	12.67	12.99	13.32	13.66	14.00	14.35	14.73	15.09	15.48
H45	12.48	12.80	13.13	13.45	13.79	14.13	14.50	14.88	15.24	15.64
H46	12.61	12.92	13.26	13.58	13.93	14.28	14.64	15.03	15.39	15.80
H47	12.74	13.05	13.39	13.72	14.07	14.42	14.79	15.18	15.54	15.95
H48	12.87	13.18	13.52	13.86	14.21	14.57	14.94	15.33	15.70	16.11
H49	12.99	13.32	13.66	14.00	14.35	14.71	15.09	15.48	15.85	16.28

**CITY OF CALABASAS  
HOURLY POSITIONS  
HOURLY WAGE RANGE / STEP SCHEDULE  
Effective July 1, 2009**

RANGE	STEP 1	STEP 2	STEP 3	STEP 4	STEP 5	STEP 6	STEP 7	STEP 8	STEP 9	STEP 10
H50	13.13	13.45	13.79	14.13	14.50	14.86	15.24	15.64	16.01	16.44
H51	13.26	13.58	13.93	14.28	14.64	15.01	15.39	15.80	16.17	16.60
H52	13.39	13.72	14.07	14.42	14.79	15.16	15.54	15.95	16.33	16.77
H53	13.52	13.86	14.21	14.57	14.94	15.31	15.70	16.11	16.49	16.93
H54	13.66	14.00	14.35	14.71	15.09	15.47	15.85	16.28	16.66	17.10
H55	13.79	14.13	14.50	14.86	15.24	15.62	16.01	16.44	16.83	17.27
H56	13.93	14.28	14.64	15.01	15.39	15.78	16.17	16.60	17.00	17.45
H57	14.07	14.42	14.79	15.16	15.54	15.93	16.33	16.77	17.16	17.62
H58	14.21	14.57	14.94	15.31	15.70	16.10	16.49	16.93	17.34	17.80
H59	14.35	14.71	15.09	15.47	15.85	16.26	16.66	17.10	17.51	17.98
H60	14.50	14.86	15.24	15.62	16.01	16.42	16.83	17.27	17.68	18.16
H61	14.64	15.01	15.39	15.78	16.17	16.58	17.00	17.45	17.86	18.33
H62	14.79	15.16	15.54	15.93	16.33	16.75	17.16	17.62	18.04	18.52
H63	14.94	15.31	15.70	16.10	16.49	16.92	17.34	17.80	18.22	18.70
H64	15.09	15.47	15.85	16.26	16.66	17.08	17.51	17.98	18.40	18.89
H65	15.24	15.62	16.01	16.42	16.83	17.26	17.68	18.16	18.59	19.08
H66	15.39	15.78	16.17	16.58	17.00	17.43	17.86	18.33	18.77	19.27
H67	15.54	15.93	16.33	16.75	17.16	17.60	18.04	18.52	18.96	19.46
H68	15.70	16.10	16.49	16.92	17.34	17.78	18.22	18.70	19.15	19.66
H69	15.85	16.26	16.66	17.08	17.51	17.96	18.40	18.89	19.34	19.85
H70	16.01	16.42	16.83	17.26	17.68	18.14	18.59	19.08	19.54	20.05
H71	16.17	16.58	17.00	17.43	17.86	18.32	18.77	19.27	19.74	20.25
H72	16.33	16.75	17.16	17.60	18.04	18.50	18.96	19.46	19.93	20.45
H73	16.49	16.92	17.34	17.78	18.22	18.69	19.15	19.66	20.13	20.65
H74	16.66	17.08	17.51	17.96	18.40	18.87	19.34	19.85	20.34	20.86
H75	16.83	17.26	17.68	18.14	18.59	19.06	19.54	20.05	20.54	21.07
H76	17.00	17.43	17.86	18.32	18.77	19.25	19.74	20.25	20.75	21.28
H77	17.16	17.60	18.04	18.50	18.96	19.44	19.93	20.45	20.95	21.50
H78	17.34	17.78	18.22	18.69	19.15	19.64	20.13	20.65	21.16	21.71
H79	17.51	17.96	18.40	18.87	19.34	19.83	20.34	20.86	21.38	21.93
H80	17.68	18.14	18.59	19.06	19.54	20.03	20.54	21.07	21.59	22.15
H81	17.86	18.32	18.77	19.25	19.74	20.23	20.75	21.28	21.80	22.37
H82	18.04	18.50	18.96	19.44	19.93	20.43	20.95	21.50	22.02	22.59
H83	18.22	18.69	19.15	19.64	20.13	20.64	21.16	21.71	22.24	22.82
H84	18.40	18.87	19.34	19.83	20.34	20.84	21.38	21.93	22.47	23.05
H85	18.59	19.06	19.54	20.03	20.54	21.05	21.59	22.15	22.69	23.28
H86	18.77	19.25	19.74	20.23	20.75	21.26	21.80	22.37	22.92	23.51
H87	18.96	19.44	19.93	20.43	20.95	21.47	22.02	22.59	23.15	23.75
H88	19.15	19.64	20.13	20.64	21.16	21.69	22.24	22.82	23.38	23.98
H89	19.34	19.83	20.34	20.84	21.38	21.91	22.47	23.05	23.61	24.23
H90	19.54	20.03	20.54	21.05	21.59	22.13	22.69	23.28	23.85	24.47
H91	19.74	20.23	20.75	21.26	21.80	22.34	22.92	23.51	24.09	24.71
H92	19.93	20.43	20.95	21.47	22.02	22.57	23.15	23.75	24.33	24.96
H93	20.13	20.64	21.16	21.69	22.24	22.79	23.38	23.98	24.57	25.21
H94	20.34	20.84	21.38	21.91	22.47	23.03	23.61	24.23	24.82	25.46
H95	20.54	21.05	21.59	22.13	22.69	23.26	23.85	24.47	25.07	25.71
H96	20.75	21.26	21.80	22.34	22.92	23.49	24.09	24.71	25.32	25.97
H97	20.95	21.47	22.02	22.57	23.15	23.72	24.33	24.96	25.57	26.23
H98	21.16	21.69	22.24	22.79	23.38	23.96	24.57	25.21	25.82	26.49

**CITY OF CALABASAS  
HOURLY POSITIONS  
HOURLY WAGE RANGE / STEP SCHEDULE  
Effective July 1, 2009**

RANGE	STEP 1	STEP 2	STEP 3	STEP 4	STEP 5	STEP 6	STEP 7	STEP 8	STEP 9	STEP 10
H99	21.38	21.91	22.47	23.03	23.61	24.20	24.82	25.46	26.08	26.76
H100	21.59	22.13	22.69	23.26	23.85	24.44	25.07	25.71	26.34	27.02
H101	21.80	22.34	22.92	23.49	24.09	24.69	25.32	25.97	26.61	27.29
H102	22.02	22.57	23.15	23.72	24.33	24.93	25.57	26.23	26.87	27.57
H103	22.24	22.79	23.38	23.96	24.57	25.18	25.82	26.49	27.14	27.84
H104	22.47	23.03	23.61	24.20	24.82	25.44	26.08	26.76	27.42	28.12
H105	22.69	23.26	23.85	24.44	25.07	25.69	26.34	27.02	27.69	28.40
H106	22.92	23.49	24.09	24.69	25.32	25.95	26.61	27.29	27.97	28.68
H107	23.15	23.72	24.33	24.93	25.57	26.21	26.87	27.57	28.25	28.97
H108	23.38	23.96	24.57	25.18	25.82	26.47	27.14	27.84	28.53	29.26
H109	23.61	24.20	24.82	25.44	26.08	26.73	27.42	28.12	28.81	29.56
H110	23.85	24.44	25.07	25.69	26.34	27.00	27.69	28.40	29.10	29.85
H111	24.09	24.69	25.32	25.95	26.61	27.27	27.97	28.68	29.39	30.15
H112	24.33	24.93	25.57	26.21	26.87	27.54	28.25	28.97	29.68	30.45
H113	24.57	25.18	25.82	26.47	27.14	27.82	28.53	29.26	29.98	30.76
H114	24.82	25.44	26.08	26.73	27.42	28.10	28.81	29.56	30.28	31.06
H115	25.07	25.69	26.34	27.00	27.69	28.38	29.10	29.85	30.58	31.37
H116	25.32	25.95	26.61	27.27	27.97	28.66	29.39	30.15	30.88	31.68
H117	25.57	26.21	26.87	27.54	28.25	28.95	29.68	30.45	31.19	32.00
H118	25.82	26.47	27.14	27.82	28.53	29.24	29.98	30.76	31.51	32.32
H119	26.08	26.73	27.42	28.10	28.81	29.53	30.28	31.06	31.82	32.64
H120	26.34	27.00	27.69	28.38	29.10	29.83	30.58	31.37	32.14	32.97
H121	26.61	27.27	27.97	28.66	29.39	30.13	30.88	31.68	32.46	33.30
H122	26.87	27.54	28.25	28.95	29.68	30.43	31.19	32.00	32.79	33.63
H123	27.14	27.82	28.53	29.24	29.98	30.73	31.51	32.32	33.12	33.97
H124	27.42	28.10	28.81	29.53	30.28	31.04	31.82	32.64	33.44	34.31
H125	27.69	28.38	29.10	29.83	30.58	31.35	32.14	32.97	33.78	34.65
H126	27.97	28.66	29.39	30.13	30.88	31.66	32.46	33.30	34.12	35.00
H127	28.25	28.95	29.68	30.43	31.19	31.98	32.79	33.63	34.46	35.35
H128	28.53	29.24	29.98	30.73	31.51	32.30	33.12	33.97	34.81	35.70
H129	28.81	29.53	30.28	31.04	31.82	32.62	33.44	34.31	35.15	36.06
H130	29.10	29.83	30.58	31.35	32.14	32.95	33.78	34.65	35.50	36.42
H131	29.39	30.13	30.88	31.66	32.46	33.28	34.12	35.00	35.86	36.78
H132	29.68	30.43	31.19	31.98	32.79	33.61	34.46	35.35	36.22	37.15
H133	29.98	30.73	31.51	32.30	33.12	33.95	34.81	35.70	36.58	37.52
H134	30.28	31.04	31.82	32.62	33.44	34.29	35.15	36.06	36.95	37.90
H135	30.58	31.35	32.14	32.95	33.78	34.63	35.50	36.42	37.32	38.28
H136	30.88	31.66	32.46	33.28	34.12	34.97	35.86	36.78	37.69	38.66
H137	31.19	31.98	32.79	33.61	34.46	35.33	36.22	37.15	38.07	39.05
H138	31.51	32.30	33.12	33.95	34.81	35.68	36.58	37.52	38.45	39.44
H139	31.82	32.62	33.44	34.29	35.15	36.03	36.95	37.90	38.83	39.83
H140	32.14	32.95	33.78	34.63	35.50	36.39	37.32	38.28	39.22	40.23
H141	32.46	33.28	34.12	34.97	35.86	36.76	37.69	38.66	39.61	40.63
H142	32.79	33.61	34.46	35.33	36.22	37.13	38.07	39.05	40.01	41.04
H143	33.12	33.95	34.81	35.68	36.58	37.49	38.45	39.44	40.41	41.45
H144	33.44	34.29	35.15	36.03	36.95	37.87	38.83	39.83	40.81	41.86
H145	33.78	34.63	35.50	36.39	37.32	38.25	39.22	40.23	41.22	42.28
H146	34.12	34.97	35.86	36.76	37.69	38.63	39.61	40.63	41.63	42.70
H147	34.46	35.33	36.22	37.13	38.07	39.02	40.01	41.04	42.05	43.13

**CITY OF CALABASAS  
HOURLY POSITIONS  
HOURLY WAGE RANGE / STEP SCHEDULE  
Effective July 1, 2009**

<b>RANGE</b>	<b>STEP 1</b>	<b>STEP 2</b>	<b>STEP 3</b>	<b>STEP 4</b>	<b>STEP 5</b>	<b>STEP 6</b>	<b>STEP 7</b>	<b>STEP 8</b>	<b>STEP 9</b>	<b>STEP 10</b>
H148	34.81	35.68	36.58	37.49	38.45	39.41	40.41	41.45	42.47	43.56
H149	35.15	36.03	36.95	37.87	38.83	39.80	40.81	41.86	42.89	44.00
H150	35.50	36.39	37.32	38.25	39.22	40.20	41.22	42.28	43.32	44.44
H151	35.86	36.76	37.69	38.63	39.61	40.60	41.63	42.70	43.75	44.88
H152	36.22	37.13	38.07	39.02	40.01	41.01	42.05	43.13	44.19	45.33
H153	36.58	37.49	38.45	39.41	40.41	41.42	42.47	43.56	44.64	45.79
H154	36.95	37.87	38.83	39.80	40.81	41.83	42.89	44.00	45.08	46.25
H155	37.32	38.25	39.22	40.20	41.22	42.25	43.32	44.44	45.53	46.71
H156	37.69	38.63	39.61	40.60	41.63	42.68	43.75	44.88	45.99	47.18
H157	38.07	39.02	40.01	41.01	42.05	43.10	44.19	45.33	46.45	47.65
H158	38.45	39.41	40.41	41.42	42.47	43.53	44.64	45.79	46.92	48.13
H159	38.83	39.80	40.81	41.83	42.89	43.97	45.08	46.25	47.38	48.61
H160	39.22	40.20	41.22	42.25	43.32	44.41	45.53	46.71	47.86	49.09
H161	39.61	40.60	41.63	42.68	43.75	44.85	45.99	47.18	48.33	49.58
H162	40.01	41.01	42.05	43.10	44.19	45.30	46.45	47.65	48.82	50.08
H163	40.41	41.42	42.47	43.53	44.64	45.76	46.92	48.13	49.31	50.58
H164	40.81	41.83	42.89	43.97	45.08	46.21	47.38	48.61	49.80	51.09
H165	41.22	42.25	43.32	44.41	45.53	46.67	47.86	49.09	50.30	51.60
H166	41.63	42.68	43.75	44.85	45.99	47.14	48.33	49.58	50.80	52.11
H167	42.05	43.10	44.19	45.30	46.45	47.61	48.82	50.08	51.31	52.63
H168	42.47	43.53	44.64	45.76	46.92	48.09	49.31	50.58	51.82	53.16
H169	42.89	43.97	45.08	46.21	47.38	48.57	49.80	51.09	52.34	53.69
H170	43.32	44.41	45.53	46.67	47.86	49.06	50.30	51.60	52.86	54.23
H171	43.75	44.85	45.99	47.14	48.33	49.55	50.80	52.11	53.39	54.77
H172	44.19	45.30	46.45	47.61	48.82	50.04	51.31	52.63	53.93	55.32
H173	44.64	45.76	46.92	48.09	49.31	50.54	51.82	53.16	54.47	55.87
H174	45.08	46.21	47.38	48.57	49.80	51.05	52.34	53.69	55.01	56.43
H175	45.53	46.67	47.86	49.06	50.30	51.56	52.86	54.23	55.56	56.99
H176	45.99	47.14	48.33	49.55	50.80	52.07	53.39	54.77	56.11	57.57
H177	46.45	47.61	48.82	50.04	51.31	52.59	53.93	55.32	56.67	58.14
H178	46.92	48.09	49.31	50.54	51.82	53.12	54.47	55.87	57.24	58.73
H179	47.38	48.57	49.80	51.05	52.34	53.65	55.01	56.43	57.81	59.31
H180	47.86	49.06	50.30	51.56	52.86	54.18	55.56	56.99	58.38	59.91
H181	48.33	49.55	50.80	52.07	53.39	54.73	56.11	57.57	58.97	60.51
H182	48.82	50.04	51.31	52.59	53.93	55.28	56.67	58.14	59.56	61.11
H183	49.31	50.54	51.82	53.12	54.47	55.83	57.24	58.73	60.15	61.73
H184	49.80	51.05	52.34	53.65	55.01	56.39	57.81	59.31	60.75	62.34
H185	50.30	51.56	52.86	54.18	55.56	56.95	58.38	59.91	61.36	62.97
H186	50.80	52.07	53.39	54.73	56.11	57.53	58.97	60.51	61.97	63.59
H187	51.31	52.59	53.93	55.28	56.67	58.10	59.56	61.11	62.58	64.23
H188	51.82	53.12	54.47	55.83	57.24	58.68	60.15	61.73	63.21	64.87
H189	52.34	53.65	55.01	56.39	57.81	59.27	60.75	62.34	63.84	65.52
H190	52.86	54.18	55.56	56.95	58.38	59.87	61.36	62.97	64.48	66.17
H191	53.39	54.73	56.11	57.53	58.97	60.47	61.97	63.59	65.13	66.84
H192	53.93	55.28	56.67	58.10	59.56	61.07	62.58	64.23	65.78	67.51
H193	54.47	55.83	57.24	58.68	60.15	61.68	63.21	64.87	66.44	68.18
H194	55.01	56.39	57.81	59.27	60.75	62.30	63.84	65.52	67.10	68.86
H195	55.56	56.95	58.38	59.87	61.36	62.93	64.48	66.17	67.77	69.55
H196	56.11	57.53	58.97	60.47	61.97	63.55	65.13	66.84	68.45	70.25

**CITY OF CALABASAS  
HOURLY POSITIONS  
HOURLY WAGE RANGE / STEP SCHEDULE  
Effective July 1, 2009**

RANGE	STEP 1	STEP 2	STEP 3	STEP 4	STEP 5	STEP 6	STEP 7	STEP 8	STEP 9	STEP 10
H197	56.67	58.10	59.56	61.07	62.58	64.19	65.78	67.51	69.13	70.95
H198	57.24	58.68	60.15	61.68	63.21	64.83	66.44	68.18	69.83	71.66
H199	57.81	59.27	60.75	62.30	63.84	65.48	67.10	68.86	70.52	72.38
H200	58.38	59.87	61.36	62.93	64.48	66.13	67.77	69.55	71.23	73.10
H201	58.97	60.47	61.97	63.55	65.13	66.79	68.45	70.25	71.94	73.83
H202	59.56	61.07	62.58	64.19	65.78	67.46	69.13	70.95	72.66	74.57
H203	60.15	61.68	63.21	64.83	66.44	68.13	69.83	71.66	73.38	75.31
H204	60.75	62.30	63.84	65.48	67.10	68.82	70.52	72.38	74.12	76.07
H205	61.36	62.93	64.48	66.13	67.77	69.50	71.23	73.10	74.86	76.83
H206	61.97	63.55	65.13	66.79	68.45	70.19	71.94	73.83	75.61	77.60
H207	62.58	64.19	65.78	67.46	69.13	70.90	72.66	74.57	76.36	78.38
H208	63.21	64.83	66.44	68.13	69.83	71.61	73.38	75.31	77.12	79.16
H209	63.84	65.48	67.10	68.82	70.52	72.32	74.12	76.07	77.90	79.95
H210	64.48	66.13	67.77	69.50	71.23	73.04	74.86	76.83	78.68	80.75
H211	65.13	66.79	68.45	70.19	71.94	73.78	75.61	77.60	79.46	81.56
H212	65.78	67.46	69.13	70.90	72.66	74.52	76.36	78.38	80.26	82.37
H213	66.44	68.13	69.83	71.61	73.38	75.26	77.12	79.16	81.06	83.20
H214	67.10	68.82	70.52	72.32	74.12	76.01	77.90	79.95	81.87	84.03
H215	67.77	69.50	71.23	73.04	74.86	76.77	78.68	80.75	82.69	84.87
H216	68.45	70.19	71.94	73.78	75.61	77.54	79.46	81.56	83.52	85.72
H217	69.13	70.90	72.66	74.52	76.36	78.31	80.26	82.37	84.35	86.58
H218	69.83	71.61	73.38	75.26	77.12	79.10	81.06	83.20	85.19	87.44
H219	70.52	72.32	74.12	76.01	77.90	79.89	81.87	84.03	86.05	88.32
H220	71.23	73.04	74.86	76.77	78.68	80.68	82.69	84.87	86.91	89.20
H221	71.94	73.78	75.61	77.54	79.46	81.49	83.52	85.72	87.78	90.10
H222	72.66	74.52	76.36	78.31	80.26	82.30	84.35	86.58	88.66	91.00
H223	73.38	75.26	77.12	79.10	81.06	83.13	85.19	87.44	89.54	91.91
H224	74.12	76.01	77.90	79.89	81.87	83.96	86.05	88.32	90.44	92.83
H225	74.86	76.77	78.68	80.68	82.69	84.80	86.91	89.20	91.34	93.76
H226	75.61	77.54	79.46	81.49	83.52	85.65	87.78	90.10	92.26	94.70
H227	76.36	78.31	80.26	82.30	84.35	86.50	88.66	91.00	93.18	95.64
H228	77.12	79.10	81.06	83.13	85.19	87.37	89.54	91.91	94.11	96.60
H229	77.90	79.89	81.87	83.96	86.05	88.24	90.44	92.83	95.05	97.56
H230	78.68	80.68	82.69	84.80	86.91	89.12	91.34	93.76	96.01	98.54
H231	79.46	81.49	83.52	85.65	87.78	90.01	92.26	94.70	96.96	99.53
H232	80.26	82.30	84.35	86.50	88.66	90.91	93.18	95.64	97.93	100.52
H233	81.06	83.13	85.19	87.37	89.54	91.82	94.11	96.60	98.91	101.53
H234	81.87	83.96	86.05	88.24	90.44	92.74	95.05	97.56	99.90	102.54
H235	82.69	84.80	86.91	89.12	91.34	93.67	96.01	98.54	100.90	103.57
H236	83.52	85.65	87.78	90.01	92.26	94.60	96.96	99.53	101.91	104.61
H237	84.35	86.50	88.66	90.91	93.18	95.55	97.93	100.52	102.93	105.65
H238	85.19	87.37	89.54	91.82	94.11	96.51	98.91	101.53	103.96	106.71
H239	86.05	88.24	90.44	92.74	95.05	97.47	99.90	102.54	104.99	107.78
H240	86.91	89.12	91.34	93.67	96.01	98.45	100.90	103.57	106.04	108.85
H241	87.78	90.01	92.26	94.60	96.96	99.43	101.91	104.61	107.11	109.94
H242	88.66	90.91	93.18	95.55	97.93	100.43	102.93	105.65	108.18	111.05
H243	89.54	91.82	94.11	96.51	98.91	101.43	103.96	106.71	109.26	112.15
H244	90.44	92.74	95.05	97.47	99.90	102.44	104.99	107.78	110.35	113.27
H245	91.34	93.67	96.01	98.45	100.90	103.47	106.04	108.85	111.46	114.40

**CITY OF CALABASAS  
HOURLY POSITIONS  
HOURLY WAGE RANGE / STEP SCHEDULE  
Effective July 1, 2009**

<b>RANGE</b>	<b>STEP 1</b>	<b>STEP 2</b>	<b>STEP 3</b>	<b>STEP 4</b>	<b>STEP 5</b>	<b>STEP 6</b>	<b>STEP 7</b>	<b>STEP 8</b>	<b>STEP 9</b>	<b>STEP 10</b>
H246	92.26	94.60	96.96	99.43	101.91	104.50	107.11	109.94	112.57	115.55
H247	93.18	95.55	97.93	100.43	102.93	105.55	108.18	111.05	113.69	116.70
H248	94.11	96.51	98.91	101.43	103.96	106.60	109.26	112.15	114.83	117.87